

City of West Hollywood

Photo Enforcement Program



Monthly Report



December 2012



Prepared by: ACS Transportation Solutions
Confidential

Table of Contents

Page Title	Page
<i>Executive Summary.....</i>	2
<i>Approach Summary Report, All Locations.....</i>	3
<i>Approach Summary Report, Location 3103: E/B Beverly @ Robertson.....</i>	4
<i>Approach Summary Report, Location 3104: W/B Beverly @ Robertson.....</i>	5
<i>Approach Summary Report, Location 3111: N/B Fairfax @ Fountain.....</i>	6
<i>Approach Summary Report, Location 3112: S/B Fairfax @ Fountain.....</i>	7
<i>Approach Summary Report, Location 3113: E/B Fountain @ Fairfax.....</i>	8
<i>Approach Summary Report, Location 3121: N/B Crescent Heights @ Fountain.....</i>	9
<i>Approach Summary Report, Location 3122: S/B Crescent Heights @ Fountain.....</i>	10
<i>Approach Summary Report, Location 3123: E/B Fountain @ Crescent Heights.....</i>	11
<i>Approach Summary Report, Location 3124: W/B Fountain @ Crescent Heights.....</i>	12
<i>Approach Summary Report, Location 3131: N/B La Cienega @ Melrose.....</i>	13
<i>Approach Summary Report, Location 3132: S/B La Cienega @ Melrose.....</i>	14
<i>Approach Summary Report, Location 3133: E/B Melrose @ La Cienega.....</i>	15
<i>Approach Summary Report, Location 3141: N/B La Brea @ Fountain.....</i>	16
<i>Approach Summary Report, Location 3142: S/B La Brea @ Fountain.....</i>	17
<i>Approach Summary Report, Location 3143: E/B Sunset @ La Cienega.....</i>	18
<i>Approach Summary Report, Location 3144: W/B Sunset @ La Cienega.....</i>	19
<i>Approach Summary Report, Location 3151: N/B Fairfax @ Santa Monica.....</i>	20
<i>Approach Summary Report, Location 3152: S/B Fairfax @ Santa Monica.....</i>	21
<i>Approach Summary Report, Location 3153: E/B Santa Monica @ Fairfax.....</i>	22
<i>Approach Summary Report, Location 3154: W/B Santa Monica @ Fairfax.....</i>	23
<i>Approach Summary Report, Location 3161: N/B La Brea @ Santa Monica.....</i>	24
<i>Approach Summary Report, Location 3162: S/B La Brea @ Santa Monica.....</i>	25
<i>Approach Summary Report, Location 3163: E/B Santa Monica @ La Brea.....</i>	26
<i>Approach Summary Report, Location 3164: W/B Santa Monica @ La Brea.....</i>	27
<i>Customer Service Report.....</i>	28
<i>Monthly Citation Yield Report.....</i>	29
<i>Camera Rotation Log.....</i>	30
<i>Performance Report.....</i>	31
<i>Disposition Summary Report.....</i>	32

Executive Summary

In December 2012, the photo enforcement project for the City of West Hollywood captured 3,854 events. The project recorded 1,571 violations and 2,2483 non-violations. The Sheriff's Department issued 868 citations reflecting a 55% issuance rate and a controllable issuance rate of 96%.

In December there were 16 violations identified as dark interior. In all cases they were isolated incidents spread across all locations. These are generally due to the vehicle configuration, or shape, not allowing enough light in for clear identification of the driver rather than a controllable issue such as a malfunctioning flash unit.

There were 71 violations in Deputy Porche's queue that expired during the holidays which we sent to him too close to the expiration date. Also, 12 violations expired before we were able to send them to Deputy Porche for review. This was in part due to timing surrounding the holidays and an unforeseen increase in workload. We have addressed the oversight and it should not be a problem going forward.

In the News - Photo Enforcement Around the Country

Virginia Orders Longer Yellow Times at Intersections

Friday, January 18, 2013

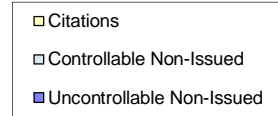
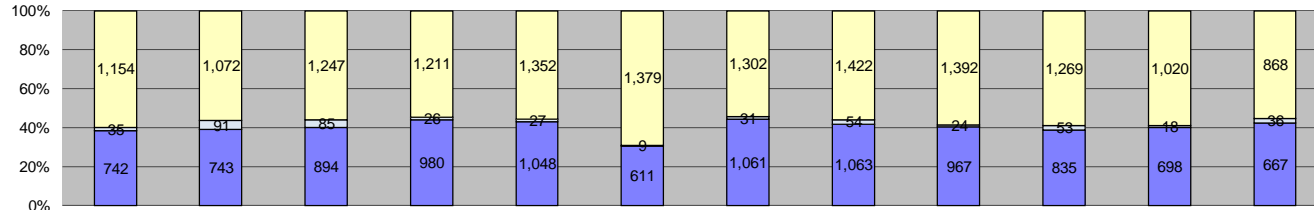
www.thenewspaper.com

The consensus is growing that drivers are being shortchanged by the duration of yellow lights at intersections. The Virginia Department of Transportation (VDOT) acknowledged this last week with a directive updating the way yellow times are calculated. On average, motorists will have about 0.5 seconds of additional time to come to a full stop. With the change, Virginia is following the lead of the National Cooperative Highway Research Program (NCHRP) which released a study in October recommending state jurisdictions update their practices to be more consistent with proper engineering principles.

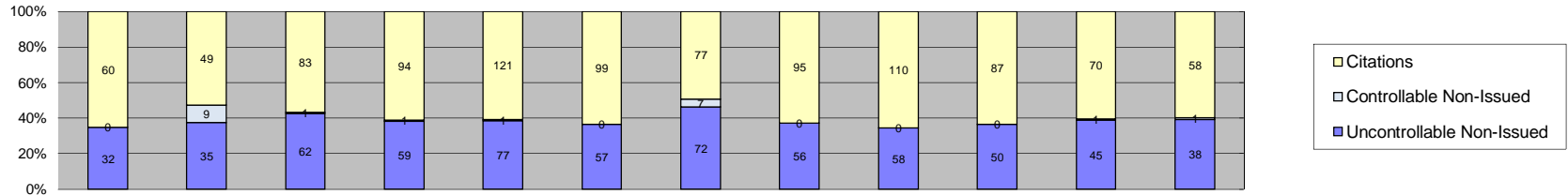
The NCHRP study found local traffic engineers tended to deliberately post speed limits far below the actual speed of traffic. They would then use this overly low posted limit in the mathematical equation used to determine how much time drivers need to stop, resulting in an overly short yellow time. The Institute for Transportation Engineers developed its yellow time equation to work with the "85th percentile" speed of traffic, which means measuring how fast at least 85 percent of traffic is moving in free-flow traffic conditions.

The new VDOT rules follow the NCHRP recommendation to use the 85th or a higher value for vehicle speed, or "V", in the equation. "V is the 85th percentile vehicle approach speed as determined under free-flow conditions, if known or as determined by a speed study," the new VDOT rules state. "If the 85th percentile value is not available, the posted speed limit plus 7 MPH should be used as the vehicle speed value." NCHRP calculated 7 MPH value represented the best approximation of the amount to add to a posted limit so that the speed value reflects reality. J.J. Bahen Jr., a traffic engineer with the National Motorists Association, applauded Virginia's change. "You no longer have to slam on brakes in Virginia to avoid a red light camera citation.," Bahen told TheNewspaper. "Intersection safety is dependent on the proper timing of traffic signals. The National Motorists Association has been reporting to VDOT that its yellow intervals are too short for several years. VDOT finally listened, and has begun to fix the problem. We commend them, and look forward to working with them on other problems that affect the safety and rights of the motoring public."

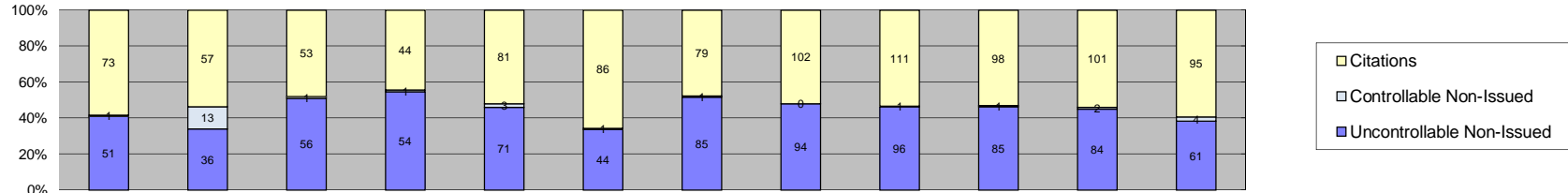
Critics of red light camera usage such as the NMA pointed to the issue of short yellows more than a decade ago, but the opinion of the engineering community has only recently caught up. As late as 2009, the Federal Highway Administration still allowed the posted speed limit to be used as a substitute to the preferred 85th percentile speed measurement. The states of Georgia and Ohio each mandate by law one additional second of yellow at any intersection that uses a red light camera



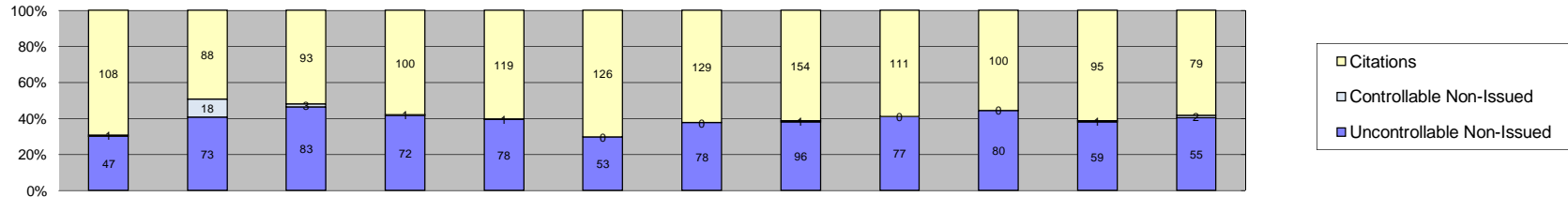
Events	Year to Date Average												2011 Average			
	Jan-12	Feb-12	Mar-12	Apr-12	May-12	Jun-12	Jul-12	Aug-12	Sep-12	Oct-12	Nov-12	Dec-12	Quantity	%	Quantity	%
Non-Violations	2,421	2,352	2,581	2,703	2,789	1,228	2,412	2,698	2,704	2,410	2,247	2,283	2,402	53%	2,891	62%
Violations	1,931	1,906	2,226	2,217	2,427	1,999	2,394	2,539	2,383	2,157	1,736	1,571	2,124	47%	1,805	38%
Total:	4,352	4,258	4,807	4,920	5,216	3,227	4,806	5,237	5,087	4,567	3,983	3,854	4,526	100%	4,696	100%
Violations																
Uncontrollable Non-Issued	742	743	894	980	1,048	611	1,061	1,063	967	835	698	667	859	40%	766	41%
Controllable Non-Issued	35	91	85	26	27	9	31	54	24	53	18	36	41	2%	159	9%
Citations	1,154	1,072	1,247	1,211	1,352	1,379	1,302	1,422	1,392	1,269	1,020	868	1,224	58%	929	50%
Total:	1,931	1,906	2,226	2,217	2,427	1,999	2,394	2,539	2,383	2,157	1,736	1,571	2,124	100%	1,855	100%
Non-Violations																
Rear Axle Violation	26	17	20	29	39	12	25	23	16	10	8	15	20	1%	29	1%
Emergency Vehicle	118	109	111	79	91	38	95	128	92	87	67	73	91	4%	138	5%
Right Turn	966	998	1,103	1,220	1,224	521	984	1,215	1,198	1,046	713	752	995	41%	1,038	35%
No Violation Occurred	1,311	1,228	1,347	1,375	1,435	657	1,308	1,332	1,398	1,267	1,459	1,443	1,297	54%	1,732	59%
Total:	2,421	2,352	2,581	2,703	2,789	1,228	2,412	2,698	2,704	2,410	2,247	2,283	2,402	100%	2,937	100%
Uncontrollable Non-Issued Violations																
No Plate	331	330	396	429	439	180	453	478	452	380	308	282	372	43%	305	30%
Out of State Plate	6	57	75	79	88	58	88	38	59	38	1	31	52	6%	59	6%
Glare on Plate	4	2	13	8	29	11	28	20	17	13	3	10	13	2%	21	2%
Illegible Plate	12	14	18	34	8	8	23	13	19	12	24	10	16	2%	21	2%
Plate Obstructed	23	21	13	31	22	6	36	32	24	17	18	24	22	3%	31	3%
Windshield Glare	25	52	97	143	169	79	132	138	78	79	49	49	91	10%	95	10%
Driver Obstructed	22	18	19	24	28	10	28	23	20	17	24	16	21	2%	38	4%
Car Obstructed	28	30	36	37	31	23	30	35	29	39	25	29	31	4%	47	5%
No DMV Match Found	216	139	163	149	156	155	149	206	194	186	185	106	167	19%	130	13%
LASD Expired	0	9	5	0	2	4	1	7	0	1	21	71	13	2%	9	1%
LASD Return	44	48	33	35	65	73	79	67	71	51	36	31	53	6%	41	4%
Yellow Interval Not Met	24	17	22	10	5	3	1	0	0	0	0	0	12	1%	40	4%
Other	7	6	4	1	6	1	13	6	4	2	4	8	5	1%	165	16%
Total:	742	743	894	980	1,048	611	1,061	1,063	967	835	698	667	867	100%	1,003	100%
Controllable Non-Issued Violations																
Framing of Plate	1	2	1	4	0	0	0	2	2	1	0	0	2	3%	11	3%
Focus / Clarity of Plate	0	4	3	5	1	0	2	0	0	0	2	2	3	4%	14	3%
Dark Interior	14	19	26	11	14	5	9	10	14	9	10	16	13	21%	42	10%
Framing of Driver	2	0	0	2	0	1	1	0	0	0	0	1	1	2%	6	1%
Focus / Clarity of Driver	1	4	1	1	0	0	0	0	0	0	3	0	2	3%	13	3%
Framing of Car	7	4	5	1	3	0	3	0	0	2	0	0	4	6%	19	4%
Operator / Data Error	0	0	0	0	0	0	6	40	3	21	0	0	18	28%	3	1%
Exposure	2	0	0	0	0	0	2	2	0	4	1	0	2	4%	39	9%
Equipment Malfunction	7	8	48	2	7	1	7	0	5	15	2	5	10	15%	280	64%
ACS Expired	1	50	1	0	2	2	1	0	0	1	0	12	9	14%	8	2%
Total:	35	91	85	26	27	9	31	54	24	53	18	36	63	100%	435	100%
Summary Metrics													Year to Date Average		2011 Average	
Daily Ave Vehicle Passes	251,135	261,668	261,644	268,102	237,611	217,926	264,495	245,627	291,596	265,152	251,852	256,814	256,135		297,039	
Ave Issued Speed	33	33	32	32	33	32	32	32	33	34	33	33	33		33	
Ave Issued Red Seconds	0.9	0.7	0.8	0.6	0.7	0.7	0.6	0.6	0.6	1.1	0.8	1.0	0.7		0.8	
Citation / Violation Iss Rate	60%	56%	56%	55%	56%	69%	54%	56%	58%	59%	59%	55%	58%		58%	
Controllable Iss Rate	97%	92%	94%	98%	98%	99%	98%	96%	98%	96%	98%	96%	97%		97%	



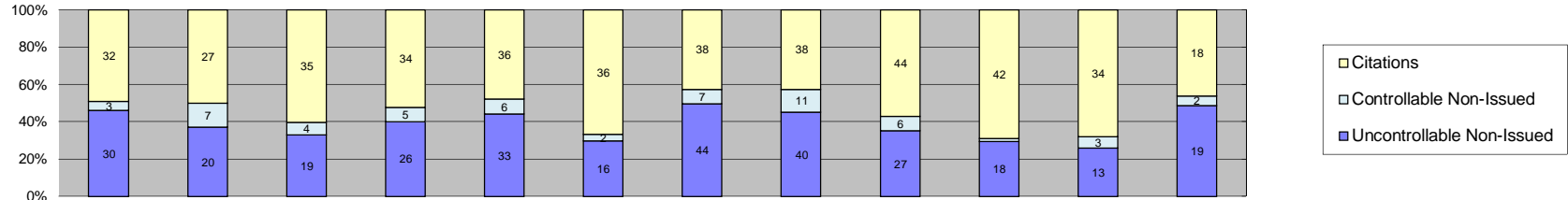
Events	Jan-12	Feb-12	Mar-12	Apr-12	May-12	Jun-12	Jul-12	Aug-12	Sep-12	Oct-12	Nov-12	Dec-12	Year to Date Average		2011 Average	
													Quantity	%	Quantity	%
Non-Violations	29	32	37	34	54	23	47	45	45	36	23	38	37	21%	38	31%
Violations	92	93	146	154	199	156	156	151	168	137	116	97	139	79%	86	69%
Total:	121	125	183	188	253	179	203	196	213	173	139	135	176	100%	124	100%
Violations																
Uncontrollable Non-Issued	32	35	62	59	77	57	72	56	58	50	45	38	53	38%	33	38%
Controllable Non-Issued	0	9	1	1	1	0	7	0	0	0	1	1	3	2%	6	6%
Citations	60	49	83	94	121	99	77	95	110	87	70	58	84	60%	48	56%
Total:	92	93	146	154	199	156	156	151	168	137	116	97	140	100%	86	100%
Non-Violations																
Rear Axle Violation	0	1	0	0	0	1	0	1	0	0	1	0	1	3%	1	3%
Emergency Vehicle	17	12	6	0	10	0	6	2	9	8	1	9	8	20%	10	25%
Right Turn	2	1	0	2	3	1	2	1	1	1	1	1	1	4%	1	3%
No Violation Occurred	10	18	31	32	41	21	39	41	35	27	20	28	29	73%	27	70%
Total:	29	32	37	34	54	23	47	45	45	36	23	38	39	100%	39	100%
Uncontrollable Non-Issued Violations																
No Plate	11	16	34	23	28	17	30	17	31	20	27	13	22	37%	17	42%
Out of State Plate	0	1	6	2	6	2	3	2	2	2	0	2	3	5%	2	5%
Glare on Plate	0	0	0	0	0	0	0	1	0	0	0	0	1	2%	0	0%
Illegible Plate	0	2	1	1	0	1	0	0	0	0	0	0	1	2%	1	3%
Plate Obstructed	0	2	0	1	0	0	0	4	1	0	0	2	2	3%	1	3%
Windshield Glare	1	0	2	12	18	7	14	3	1	3	1	3	6	10%	4	10%
Driver Obstructed	4	6	1	8	7	2	7	4	4	6	5	3	5	8%	6	14%
Car Obstructed	0	0	4	0	0	1	0	0	2	0	1	0	2	3%	1	2%
No DMV Match Found	10	4	10	7	7	12	8	13	6	11	6	10	9	14%	5	11%
LASD Expired	0	0	0	0	1	0	0	1	0	0	1	1	1	2%	0	0%
LASD Return	6	4	4	5	10	15	9	11	11	8	3	4	8	12%	3	8%
Yellow Interval Not Met	0	0	0	0	0	0	0	0	0	0	0	0	0	0%	0	0%
Other	0	0	0	0	0	0	1	0	0	0	1	0	1	2%	1	3%
Total:	32	35	62	59	77	57	72	56	58	50	45	38	60	100%	40	100%
Controllable Non-Issued Violations																
Framing of Plate	0	0	0	0	0	0	0	0	0	0	0	0	0	0%	0	0%
Focus / Clarity of Plate	0	0	0	0	0	0	0	0	0	0	0	0	0	0%	1	14%
Dark Interior	0	1	1	1	1	0	1	0	0	0	0	1	1	6%	4	57%
Framing of Driver	0	0	0	0	0	0	0	0	0	0	0	0	0	0%	0	0%
Focus / Clarity of Driver	0	0	0	0	0	0	0	0	0	0	1	0	1	6%	1	14%
Framing of Car	0	0	0	0	0	0	0	0	0	0	0	0	0	0%	0	0%
Operator / Data Error	0	0	0	0	0	0	6	0	0	0	0	0	6	38%	0	0%
Exposure	0	0	0	0	0	0	0	0	0	0	0	0	0	0%	0	0%
Equipment Malfunction	0	0	0	0	0	0	0	0	0	0	0	0	0	0%	0	0%
ACS Expired	0	8	0	0	0	0	0	0	0	0	0	0	8	50%	1	14%
Total:	0	9	1	1	1	0	7	0	0	0	1	1	16	100%	7	100%
Summary Metrics													Year to Date Average		2011 Average	
Daily Ave Vehicle Passes	11,595	11,092	11,475	11,019	10,304	8,773	10,925	10,120	10,972	11,579	10,377	11,150	10,782		10,824	
Ave Issued Speed	33	30	31	31	30	28	31	28	31	31	31	31	30		31	
Ave Issued Red Seconds	1.0	1.4	1.3	1.1	0.6	1.3	0.6	0.7	0.6	0.7	0.6	1.0	1		1.0	
Citation / Violation Iss Rate	65%	53%	57%	61%	61%	63%	49%	63%	65%	64%	60%	60%	60%		56%	
Controllable Iss Rate	100%	84%	99%	99%	99%	100%	92%	100%	100%	100%	99%	98%	97%		90%	



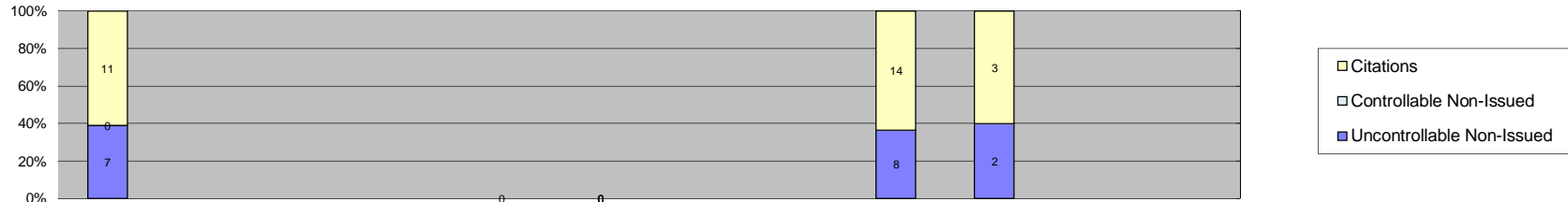
Events	Jan-12	Feb-12	Mar-12	Apr-12	May-12	Jun-12	Jul-12	Aug-12	Sep-12	Oct-12	Nov-12	Dec-12	Year to Date Average		2011 Average	
													Quantity	%	Quantity	%
Non-Violations	15	16	13	9	9	7	18	16	18	8	7	15	13	8%	12	12%
Violations	125	106	110	99	155	131	165	196	208	184	187	160	152	92%	87	88%
Total:	140	122	123	108	164	138	183	212	226	192	194	175	165	100%	99	100%
Violations																
Uncontrollable Non-Issued	51	36	56	54	71	44	85	94	96	85	84	61	68	45%	36	41%
Controllable Non-Issued	1	13	1	1	3	1	1	0	1	1	2	4	3	2%	3	3%
Citations	73	57	53	44	81	86	79	102	111	98	101	95	82	54%	49	56%
Total:	125	106	110	99	155	131	165	196	208	184	187	160	152	100%	87	100%
Non-Violations																
Rear Axle Violation	0	1	2	3	3	3	1	4	3	3	1	4	3	19%	2	16%
Emergency Vehicle	4	2	3	1	0	0	4	1	1	1	0	4	2	17%	2	16%
Right Turn	2	1	1	0	0	1	1	1	0	1	2	1	1	9%	2	12%
No Violation Occurred	9	12	7	5	6	3	12	10	14	3	4	6	8	55%	8	56%
Total:	15	16	13	9	9	7	18	16	18	8	7	15	14	100%	14	100%
Uncontrollable Non-Issued Violations																
No Plate	16	14	15	19	21	5	28	29	30	32	31	20	22	29%	14	32%
Out of State Plate	1	3	3	5	6	2	3	3	6	2	0	3	3	5%	3	6%
Glare on Plate	0	0	2	2	4	2	3	7	3	4	0	4	3	5%	1	2%
Illegible Plate	0	1	0	2	2	0	5	6	5	5	7	5	4	6%	1	2%
Plate Obstructed	0	0	0	0	1	0	2	1	2	0	1	2	2	2%	1	3%
Windshield Glare	1	4	16	10	7	5	15	18	13	7	2	3	8	11%	6	13%
Driver Obstructed	5	2	8	3	9	2	8	6	7	7	9	5	6	8%	5	11%
Car Obstructed	2	1	1	0	0	0	0	4	1	1	1	0	2	2%	1	3%
No DMV Match Found	17	5	7	11	9	17	12	13	14	12	22	9	12	17%	7	16%
LASD Expired	0	0	0	0	0	0	0	0	0	1	0	4	3	3%	1	2%
LASD Return	9	6	4	2	12	11	9	7	14	14	11	6	9	12%	3	47%
Yellow Interval Not Met	0	0	0	0	0	0	0	0	0	0	0	0	0	0%	0	0%
Other	0	0	0	0	0	0	0	0	1	0	0	0	1	1%	1	2%
Total:	51	36	56	54	71	44	85	94	96	85	84	61	75	100%	43	100%
Controllable Non-Issued Violations																
Framing of Plate	1	1	0	0	0	0	0	0	0	0	0	0	1	9%	1	18%
Focus / Clarity of Plate	0	0	0	1	0	0	0	0	0	0	0	2	2	13%	0	0%
Dark Interior	0	0	0	0	1	1	0	0	1	1	1	0	1	9%	2	22%
Framing of Driver	0	0	0	0	0	0	0	0	0	0	0	0	0	0%	0	0%
Focus / Clarity of Driver	0	0	0	0	0	0	0	0	0	0	1	0	1	9%	1	14%
Framing of Car	0	1	0	0	0	0	0	0	0	0	0	0	1	9%	2	33%
Operator / Data Error	0	0	0	0	0	0	0	0	0	0	0	0	0	0%	0	0%
Exposure	0	0	0	0	0	0	0	0	0	0	0	0	0	0%	0	0%
Equipment Malfunction	0	2	1	0	0	0	1	0	0	0	0	0	1	12%	0	0%
ACS Expired	0	9	0	0	2	0	0	0	0	0	0	2	4	39%	1	14%
Total:	1	13	1	1	3	1	1	0	1	1	2	4	11	100%	7	100%
Summary Metrics													Year to Date Average		2011 Average	
Daily Ave Vehicle Passes	11,513	16,811	11,755	11,080	11,024	9,950	11,545	10,590	11,223	12,018	11,271	11,441	11,685		10,736	
Ave Issued Speed	23	24	23	23	23	23	23	22	16	23	23	23	22		23	
Ave Issued Red Seconds	0.6	1.0	0.5	0.5	0.5	0.8	0.5	0.5	0.3	0.5	0.5	0.6	1		0.7	
Citation / Violation Iss Rate	58%	54%	48%	44%	52%	66%	48%	52%	53%	53%	54%	59%	54%		56%	
Controllable Iss Rate	99%	81%	98%	98%	96%	99%	99%	100%	99%	99%	98%	96%	97%		95%	



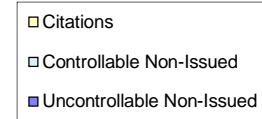
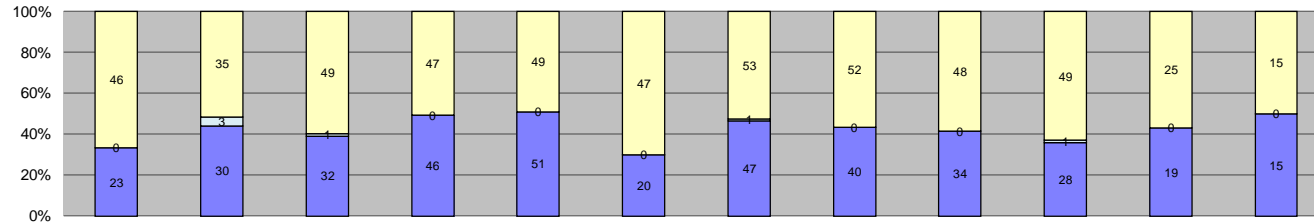
Events	Jan-12	Feb-12	Mar-12	Apr-12	May-12	Jun-12	Jul-12	Aug-12	Sep-12	Oct-12	Nov-12	Dec-12	Year to Date Average		2011 Average	
													Quantity	%	Quantity	%
Non-Violations	14	16	19	15	10	5	11	11	14	15	13	12	13	7%	15	10%
Violations	156	179	179	173	198	179	207	251	188	180	155	136	182	93%	126	90%
Total:	170	195	198	188	208	184	218	262	202	195	168	148	195	100%	141	100%
Violations																
Uncontrollable Non-Issued	47	73	83	72	78	53	78	96	77	80	59	55	71	39%	54	42%
Controllable Non-Issued	1	18	3	1	1	0	0	1	0	0	1	2	4	2%	9	7%
Citations	108	88	93	100	119	126	129	154	111	100	95	79	109	59%	65	51%
Total:	156	179	179	173	198	179	207	251	188	180	155	136	183	100%	127	100%
Non-Violations																
Rear Axle Violation	1	3	2	8	2	2	1	1	3	0	0	2	3	17%	3	19%
Emergency Vehicle	5	2	4	0	3	0	3	3	0	3	3	0	3	23%	3	22%
Right Turn	1	3	3	1	4	1	2	2	5	6	2	2	3	18%	3	18%
No Violation Occurred	7	8	10	6	1	2	5	5	6	6	8	8	6	42%	6	41%
Total:	14	16	19	15	10	5	11	11	14	15	13	12	14	100%	15	100%
Uncontrollable Non-Issued Violations																
No Plate	23	39	37	21	41	17	41	39	30	40	26	21	31	41%	22	30%
Out of State Plate	0	2	7	9	1	7	4	7	6	4	0	3	5	6%	4	5%
Glare on Plate	0	0	1	1	3	0	0	0	2	1	0	2	2	2%	1	1%
Illegible Plate	0	0	0	0	0	0	1	0	1	1	4	1	2	2%	1	2%
Plate Obstructed	1	0	1	0	0	0	3	1	2	2	3	4	2	3%	3	3%
Windshield Glare	4	7	11	10	14	4	6	7	8	3	4	1	7	9%	8	10%
Driver Obstructed	1	2	4	2	4	3	1	6	3	1	1	2	3	3%	4	5%
Car Obstructed	0	2	1	4	0	0	0	4	2	2	1	2	2	3%	2	3%
No DMV Match Found	14	12	16	16	8	19	15	20	17	17	13	10	15	19%	7	10%
LASD Expired	0	1	0	0	0	0	0	1	0	0	1	5	2	3%	1	1%
LASD Return	4	7	5	9	7	3	7	11	6	8	6	4	6	8%	2	7%
Yellow Interval Not Met	0	0	0	0	0	0	0	0	0	0	0	0	0	0%	1	1%
Other	0	1	0	0	0	0	0	0	0	1	0	0	1	1%	20	27%
Total:	47	73	83	72	78	53	78	96	77	80	59	55	77	100%	76	100%
Controllable Non-Issued Violations																
Framing of Plate	0	0	0	0	0	0	0	1	0	0	0	0	1	9%	1	4%
Focus / Clarity of Plate	0	1	1	1	0	0	0	0	0	0	1	0	1	9%	1	4%
Dark Interior	0	0	0	0	0	0	0	0	0	0	0	1	1	9%	3	13%
Framing of Driver	0	0	0	0	0	0	0	0	0	0	0	0	0	0%	1	4%
Focus / Clarity of Driver	0	0	0	0	0	0	0	0	0	0	0	0	0	0%	1	4%
Framing of Car	0	0	0	0	0	0	0	0	0	0	0	0	0	0%	0	0%
Operator / Data Error	0	0	0	0	0	0	0	0	0	0	0	0	0	0%	0	0%
Exposure	0	0	0	0	0	0	0	0	0	0	0	0	0	0%	4	15%
Equipment Malfunction	0	0	2	0	1	0	0	0	0	0	0	0	2	14%	15	56%
ACS Expired	1	17	0	0	0	0	0	0	0	0	0	1	6	58%	0	0%
Total:	1	18	3	1	1	0	0	1	0	0	1	2	11	100%	26	100%
Summary Metrics													Year to Date Average		2011 Average	
Daily Ave Vehicle Passes	11,007	12,257	12,533	18,270	10,969	10,356	11,985	11,388	12,739	11,754	11,721	12,157	12,261		11,195	
Ave Issued Speed	36	34	36	34	36	35	34	34	40	35	35	33	35		35	
Ave Issued Red Seconds	0.4	0.5	0.4	0.4	0.4	0.5	0.4	0.7	0.4	0.4	0.4	0.4	0		1	
Citation / Violation Iss Rate	69%	49%	52%	58%	60%	70%	62%	61%	59%	56%	61%	58%	60%		49%	
Controllable Iss Rate	99%	83%	97%	99%	99%	100%	100%	99%	100%	100%	99%	98%	98%		89%	



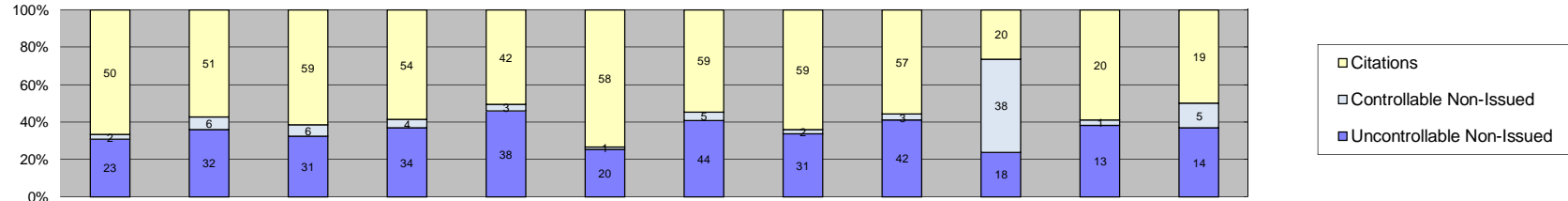
Events	Jan-12	Feb-12	Mar-12	Apr-12	May-12	Jun-12	Jul-12	Aug-12	Sep-12	Oct-12	Nov-12	Dec-12	Year to Date Average		2011 Average	
													Quantity	%	Quantity	%
Non-Violations	10	13	7	12	9	2	15	8	18	5	14	5	10	13%	9	16%
Violations	65	54	58	65	75	54	89	89	77	61	50	39	65	87%	45	84%
Total:	75	67	65	77	84	56	104	97	95	66	64	44	75	100%	54	100%
Violations																
Uncontrollable Non-Issued	30	20	19	26	33	16	44	40	27	18	13	19	25	39%	21	45%
Controllable Non-Issued	3	7	4	5	6	2	7	11	6	1	3	2	5	7%	3	7%
Citations	32	27	35	34	36	36	38	38	44	42	34	18	35	53%	22	48%
Total:	65	54	58	65	75	54	89	89	77	61	50	39	65	100%	46	100%
Non-Violations																
Rear Axle Violation	1	3	0	1	0	0	4	0	1	1	0	0	2	17%	2	22%
Emergency Vehicle	1	3	3	2	6	1	1	2	5	1	5	1	3	23%	2	22%
Right Turn	2	5	2	2	2	1	8	5	5	1	4	3	3	30%	2	21%
No Violation Occurred	6	2	2	7	1	0	2	1	7	2	5	1	3	30%	4	35%
Total:	10	13	7	12	9	2	15	8	18	5	14	5	11	100%	10	100%
Uncontrollable Non-Issued Violations																
No Plate	14	11	10	12	13	6	17	20	14	7	5	9	12	36%	8	26%
Out of State Plate	0	0	1	3	2	4	4	3	1	2	0	2	2	8%	2	7%
Glare on Plate	0	0	0	1	3	0	1	0	2	2	0	0	2	6%	0	0%
Illegible Plate	0	0	0	1	0	0	5	1	0	0	2	0	2	7%	1	3%
Plate Obstructed	2	0	0	0	1	0	4	1	2	0	0	2	2	6%	1	4%
Windshield Glare	0	1	1	4	7	2	6	3	1	0	1	1	3	8%	4	14%
Driver Obstructed	3	1	1	1	0	0	2	1	0	0	1	1	1	4%	2	8%
Car Obstructed	0	0	0	0	0	0	1	1	0	0	0	0	1	3%	1	4%
No DMV Match Found	7	7	4	3	4	3	2	9	4	6	1	2	4	13%	4	13%
LASD Expired	0	0	0	0	0	0	0	0	0	0	1	1	1	3%	0	0%
LASD Return	4	0	2	1	3	1	2	1	3	1	2	1	2	6%	2	34%
Yellow Interval Not Met	0	0	0	0	0	0	0	0	0	0	0	0	0	0%	0	0%
Other	0	0	0	0	0	0	0	0	0	0	0	0	0	0%	4	13%
Total:	30	20	19	26	33	16	44	40	27	18	13	19	32	100%	29	100%
Controllable Non-Issued Violations																
Framing of Plate	0	1	0	0	0	0	0	0	0	0	0	0	1	6%	0	0%
Focus / Clarity of Plate	0	0	0	0	0	0	0	0	0	0	0	0	0	0%	1	17%
Dark Interior	1	3	4	3	5	2	6	5	6	1	3	2	3	21%	2	36%
Framing of Driver	0	0	0	1	0	0	1	0	0	0	0	0	1	6%	1	21%
Focus / Clarity of Driver	1	1	0	1	0	0	0	0	0	0	0	0	1	6%	2	26%
Framing of Car	0	0	0	0	0	0	0	0	0	0	0	0	0	0%	0	0%
Operator / Data Error	0	0	0	0	0	0	0	6	0	0	0	0	6	37%	0	0%
Exposure	1	0	0	0	0	0	0	0	0	0	0	0	1	6%	0	0%
Equipment Malfunction	0	0	0	0	1	0	0	0	0	0	0	0	1	6%	0	0%
ACS Expired	0	2	0	0	0	0	0	0	0	0	0	0	2	12%	0	0%
Total:	3	7	4	5	6	2	7	11	6	1	3	2	16	100%	6	100%
Summary Metrics													Year to Date Average		2011 Average	
Daily Ave Vehicle Passes	10,919	11,166	11,429	16,873	10,111	9,392	10,985	9,882	11,899	10,271	10,946	11,064	11,245		10,981	
Ave Issued Speed	36	37	36	36	37	36	37	35	32	38	36	33	36		37	
Ave Issued Red Seconds	0.5	1.3	0.8	1.1	1.3	0.5	0.4	0.5	0.4	0.5	0.5	1.7	1		0.8	
Citation / Violation Iss Rate	49%	50%	60%	52%	48%	67%	43%	43%	57%	69%	68%	46%	54%		47%	
Controllable Iss Rate	91%	79%	90%	87%	86%	95%	84%	78%	88%	98%	92%	90%	88%		88%	



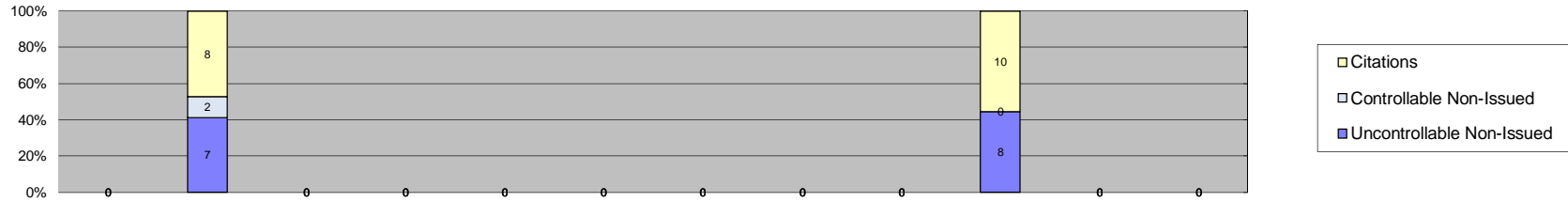
Events	Jan-12	Feb-12	Mar-12	Apr-12	May-12	Jun-12	Jul-12	Aug-12	Sep-12	Oct-12	Nov-12	Dec-12	Year to Date Average		2011 Average	
													Quantity	%	Quantity	%
Non-Violations	52	0	0	0	0	0	0	0	59	1	0	0	37	71%	29	76%
Violations	18	0	0	0	0	0	0	0	22	5	0	0	15	29%	9	24%
Total:	70	0	0	0	0	0	0	0	81	6	0	0	52	100%	38	100%
Violations																
Uncontrollable Non-Issued	7	0	0	0	0	0	0	0	8	2	0	0	6	38%	6	47%
Controllable Non-Issued	0	0	0	0	0	0	0	0	0	0	0	0	0	0%	2	13%
Citations	11	0	0	0	0	0	0	0	14	3	0	0	9	62%	5	40%
Total:	18	0	0	0	0	0	0	0	22	5	0	0	15	100%	12	100%
Non-Violations																
Rear Axle Violation	0	0	0	0	0	0	0	0	0	0	0	0	0	0%	1	3%
Emergency Vehicle	3	0	0	0	0	0	0	0	5	0	0	0	4	9%	1	3%
Right Turn	29	0	0	0	0	0	0	0	40	1	0	0	23	53%	29	73%
No Violation Occurred	20	0	0	0	0	0	0	0	14	0	0	0	17	38%	9	23%
Total:	52	0	0	0	0	0	0	0	59	1	0	0	44	100%	40	100%
Uncontrollable Non-Issued Violations																
No Plate	4	0	0	0	0	0	0	0	5	1	0	0	3	38%	2	24%
Out of State Plate	0	0	0	0	0	0	0	0	1	0	0	0	1	11%	1	12%
Glare on Plate	0	0	0	0	0	0	0	0	0	0	0	0	0	0%	0	0%
Illegible Plate	0	0	0	0	0	0	0	0	0	0	0	0	0	0%	0	0%
Plate Obstructed	0	0	0	0	0	0	0	0	0	0	0	0	0	0%	0	0%
Windshield Glare	0	0	0	0	0	0	0	0	0	0	0	0	0	0%	3	29%
Driver Obstructed	0	0	0	0	0	0	0	0	0	0	0	0	0	0%	0	0%
Car Obstructed	0	0	0	0	0	0	0	0	0	1	0	0	1	11%	1	12%
No DMV Match Found	1	0	0	0	0	0	0	0	2	0	0	0	2	17%	2	24%
LASD Expired	0	0	0	0	0	0	0	0	0	0	0	0	0	0%	0	0%
LASD Return	0	0	0	0	0	0	0	0	0	0	0	0	0	0%	0	0%
Yellow Interval Not Met	0	0	0	0	0	0	0	0	0	0	0	0	0	0%	0	0%
Other	2	0	0	0	0	0	0	0	0	0	0	0	2	23%	0	0%
Total:	7	0	0	0	0	0	0	0	8	2	0	0	9	100%	9	100%
Controllable Non-Issued Violations																
Framing of Plate	0	0	0	0	0	0	0	0	0	0	0	0	0	0	0	0%
Focus / Clarity of Plate	0	0	0	0	0	0	0	0	0	0	0	0	0	0	0	0%
Dark Interior	0	0	0	0	0	0	0	0	0	0	0	0	0	0	0	0%
Framing of Driver	0	0	0	0	0	0	0	0	0	0	0	0	0	0	0	0%
Focus / Clarity of Driver	0	0	0	0	0	0	0	0	0	0	0	0	0	0	1	33%
Framing of Car	0	0	0	0	0	0	0	0	0	0	0	0	0	0	1	33%
Operator / Data Error	0	0	0	0	0	0	0	0	0	0	0	0	0	0	0	0%
Exposure	0	0	0	0	0	0	0	0	0	0	0	0	0	0	1	33%
Equipment Malfunction	0	0	0	0	0	0	0	0	0	0	0	0	0	0	0	0%
ACS Expired	0	0	0	0	0	0	0	0	0	0	0	0	0	0	0	0%
Total:	0	0	0	0	0	0	0	0	0	0	0	0	0	0%	3	100%
Summary Metrics													Year to Date Average		2011 Average	
Daily Ave Vehicle Passes	11,351	0	0	0	0	0	0	0	11,548	6,331	0	0	9,744		8,303	
Ave Issued Speed	36	0	0	0	0	0	0	0	35	48	0	0	40		31	
Ave Issued Red Seconds	4.4	0	0	0	0	0	0	0	1.6	8.5	0	0	5		0.4	
Citation / Violation Iss Rate	61%	0%	0%	0%	0%	0%	0%	0%	64%	60%	0%	0%	62%		68%	
Controllable Iss Rate	100%	0%	0%	0%	0%	0%	0%	0%	100%	100%	0%	0%	100%		88%	



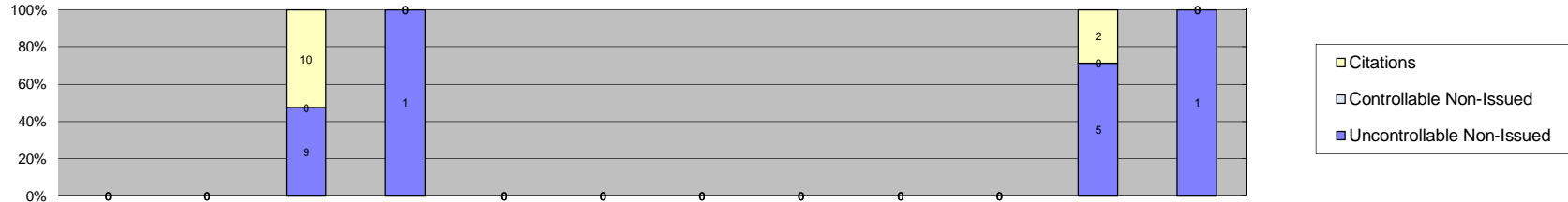
Events	2012												Year to Date Average		2011 Average	
	Jan-12	Feb-12	Mar-12	Apr-12	May-12	Jun-12	Jul-12	Aug-12	Sep-12	Oct-12	Nov-12	Dec-12	Quantity	%	Quantity	%
Non-Violations	16	23	20	38	26	7	25	24	29	15	12	12	21	21%	20	25%
Violations	69	68	82	93	100	67	101	92	82	78	44	30	76	79%	62	75%
Total:	85	91	102	131	126	74	126	116	111	93	56	42	96	100%	82	100%
Violations																
Uncontrollable Non-Issued	23	30	32	46	51	20	47	40	34	28	19	15	32	42%	25	40%
Controllable Non-Issued	0	3	1	0	0	0	1	0	0	1	0	0	2	2%	1	2%
Citations	46	35	49	47	49	47	53	52	48	49	25	15	43	56%	37	58%
Total:	69	68	82	93	100	67	101	92	82	78	44	30	77	100%	63	100%
Non-Violations																
Rear Axle Violation	0	0	0	0	0	0	0	1	0	0	0	0	1	5%	0	0%
Emergency Vehicle	0	4	2	2	5	2	1	3	4	1	3	1	3	12%	3	16%
Right Turn	9	6	11	7	6	1	11	10	8	7	4	3	7	32%	6	29%
No Violation Occurred	7	13	7	29	15	4	13	10	17	7	5	8	11	52%	11	55%
Total:	16	23	20	38	26	7	25	24	29	15	12	12	22	100%	20	100%
Uncontrollable Non-Issued Violations																
No Plate	11	14	19	22	19	6	25	28	16	11	11	9	16	38%	10	26%
Out of State Plate	0	2	1	3	4	1	7	0	4	1	0	1	3	6%	2	6%
Glare on Plate	0	0	1	1	5	5	4	1	1	0	1	3	2	6%	1	3%
Illegible Plate	0	0	0	0	0	0	1	0	3	3	0	0	2	6%	1	3%
Plate Obstructed	0	0	0	2	0	0	0	2	1	0	0	0	2	4%	1	3%
Windshield Glare	2	3	5	12	10	4	2	4	4	8	3	0	5	12%	5	14%
Driver Obstructed	0	0	0	0	0	0	1	0	0	0	0	0	1	2%	1	3%
Car Obstructed	0	1	0	1	0	0	0	0	0	0	0	0	1	2%	1	3%
No DMV Match Found	9	9	5	5	11	2	7	5	5	5	4	1	6	14%	5	13%
LASD Expired	0	0	0	0	0	0	0	0	0	0	0	1	1	2%	1	3%
LASD Return	0	0	1	0	2	2	0	0	0	0	0	0	2	4%	1	50%
Yellow Interval Not Met	0	0	0	0	0	0	0	0	0	0	0	0	0	0%	0	0%
Other	1	1	0	0	0	0	0	0	0	0	0	0	1	2%	9	23%
Total:	23	30	32	46	51	20	47	40	34	28	19	15	42	100%	39	100%
Controllable Non-Issued Violations																
Framing of Plate	0	0	0	0	0	0	0	0	0	0	0	0	0	0%	0	0%
Focus / Clarity of Plate	0	0	1	0	0	0	1	0	0	0	0	0	1	20%	1	50%
Dark Interior	0	0	0	0	0	0	0	0	0	0	0	0	0	0%	1	50%
Framing of Driver	0	0	0	0	0	0	0	0	0	0	0	0	0	0%	0	0%
Focus / Clarity of Driver	0	0	0	0	0	0	0	0	0	0	0	0	0	0%	0	0%
Framing of Car	0	0	0	0	0	0	0	0	0	0	0	0	0	0%	0	0%
Operator / Data Error	0	0	0	0	0	0	0	0	0	0	0	0	0	0%	0	0%
Exposure	0	0	0	0	0	0	0	0	0	0	0	0	0	0%	0	0%
Equipment Malfunction	0	0	0	0	0	0	0	0	0	1	0	0	1	20%	0	0%
ACS Expired	0	3	0	0	0	0	0	0	0	0	0	0	3	60%	0	0%
Total:	0	3	1	0	0	0	1	0	0	1	0	0	5	100%	2	100%
Summary Metrics																
Daily Ave Vehicle Passes	11,988	11,374	11,701	11,561	11,214	13,411	12,331	11,458	12,025	12,004	11,134	11,689	11,824		11,593	
Ave Issued Speed	38	34	35	38	36	37	36	37	40	37	39	38	37		36	
Ave Issued Red Seconds	0.4	0.9	0.4	0.8	0.5	0.4	0.4	0.5	0.5	1.1	1.9	0.5	1		1	
Citation / Violation Iss Rate	67%	51%	60%	51%	49%	70%	52%	57%	59%	63%	57%	50%	57%		59%	
Controllable Iss Rate	100%	92%	98%	100%	100%	100%	98%	100%	100%	98%	100%	100%	99%		99%	



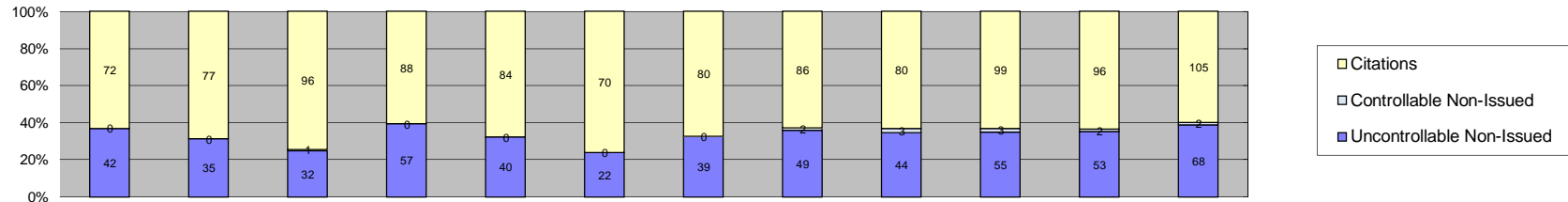
Events	Jan-12	Feb-12	Mar-12	Apr-12	May-12	Jun-12	Jul-12	Aug-12	Sep-12	Oct-12	Nov-12	Dec-12	Year to Date Average		2011 Average	
													Quantity	%	Quantity	%
Non-Violations	36	31	41	24	31	24	39	36	45	30	25	27	32	29%	28	29%
Violations	75	89	96	92	83	79	108	92	102	76	34	38	80	71%	69	71%
Total:	111	120	137	116	114	103	147	128	147	106	59	65	113	100%	97	100%
Violations																
Uncontrollable Non-Issued	23	32	31	34	38	20	44	31	42	18	13	14	28	35%	25	36%
Controllable Non-Issued	2	6	6	4	3	1	5	2	3	38	1	5	6	8%	4	6%
Citations	50	51	59	54	42	58	59	59	57	20	20	19	46	57%	41	59%
Total:	75	89	96	92	83	79	108	92	102	76	34	38	80	100%	69	100%
Non-Violations																
Rear Axle Violation	0	0	0	0	0	1	0	0	0	0	0	0	1	3%	0	0%
Emergency Vehicle	5	3	5	0	3	1	4	2	3	2	1	1	3	8%	3	9%
Right Turn	16	18	22	16	16	12	17	14	25	18	9	11	16	48%	15	54%
No Violation Occurred	15	10	14	8	12	10	18	20	17	10	15	15	14	41%	10	37%
Total:	36	31	41	24	31	24	39	36	45	30	25	27	34	100%	28	100%
Uncontrollable Non-Issued Violations																
No Plate	13	18	15	24	20	10	21	21	28	8	5	4	16	43%	13	38%
Out of State Plate	0	2	3	2	4	1	3	0	1	2	0	0	2	6%	3	8%
Glare on Plate	0	0	0	0	1	0	1	0	1	0	0	0	1	3%	0	0%
Illegible Plate	0	1	0	1	0	0	1	0	1	0	0	0	1	3%	2	6%
Plate Obstructed	0	1	1	0	0	1	0	1	1	0	0	1	1	3%	1	4%
Windshield Glare	1	1	5	4	5	3	5	1	0	0	1	4	3	8%	4	11%
Driver Obstructed	1	0	0	0	1	0	0	0	0	0	0	0	1	3%	2	4%
Car Obstructed	1	0	0	0	1	0	0	1	0	2	0	1	1	3%	1	4%
No DMV Match Found	6	5	6	3	6	2	11	5	9	6	5	3	6	16%	5	14%
LASD Expired	0	0	0	0	0	0	0	1	0	0	2	1	1	4%	1	3%
LASD Return	1	4	0	0	0	3	2	1	1	0	0	0	2	6%	3	32%
Yellow Interval Not Met	0	0	0	0	0	0	0	0	0	0	0	0	0	0%	0	0%
Other	0	0	1	0	0	0	0	0	0	0	0	0	1	3%	0	0%
Total:	23	32	31	34	38	20	44	31	42	18	13	14	36	100%	33	100%
Controllable Non-Issued Violations																
Framing of Plate	0	0	0	0	0	0	0	0	0	0	0	0	0	0%	0	0%
Focus / Clarity of Plate	0	0	0	0	0	0	0	0	0	0	0	0	0	0%	0	0%
Dark Interior	2	0	5	3	2	0	0	2	0	5	1	5	3	10%	3	31%
Framing of Driver	0	0	0	0	0	0	0	0	0	0	0	0	0	0%	1	11%
Focus / Clarity of Driver	0	0	0	0	0	0	0	0	0	0	0	0	0	0%	2	21%
Framing of Car	0	0	0	0	0	0	0	0	0	0	0	0	0	0%	1	11%
Operator / Data Error	0	0	0	0	0	0	0	0	0	20	0	0	20	61%	0	0%
Exposure	0	0	0	0	0	0	0	0	0	0	0	0	0	0%	1	11%
Equipment Malfunction	0	0	1	1	1	1	5	0	3	13	0	0	4	11%	1	15%
ACS Expired	0	6	0	0	0	0	0	0	0	0	0	0	6	18%	0	0%
Total:	2	6	6	4	3	1	5	2	3	38	1	5	33	100%	9	100%
Summary Metrics													Year to Date Average		2011 Average	
Daily Ave Vehicle Passes	12,478	12,528	12,770	12,512	12,204	10,727	13,380	12,647	12,750	13,185	11,581	12,573	12,445		12,504	
Ave Issued Speed	37	38	38	40	37	40	38	38	40	39	35	40	38		38	
Ave Issued Red Seconds	0.6	0.5	0.8	0.6	1.2	0.5	0.6	0.5	0.6	0.5	2.7	1.9	1		0.7	
Citation / Violation Iss Rate	67%	57%	61%	59%	51%	73%	55%	64%	56%	26%	59%	50%	56%		58%	
Controllable Iss Rate	96%	89%	91%	93%	93%	98%	92%	97%	95%	34%	95%	79%	88%		91%	



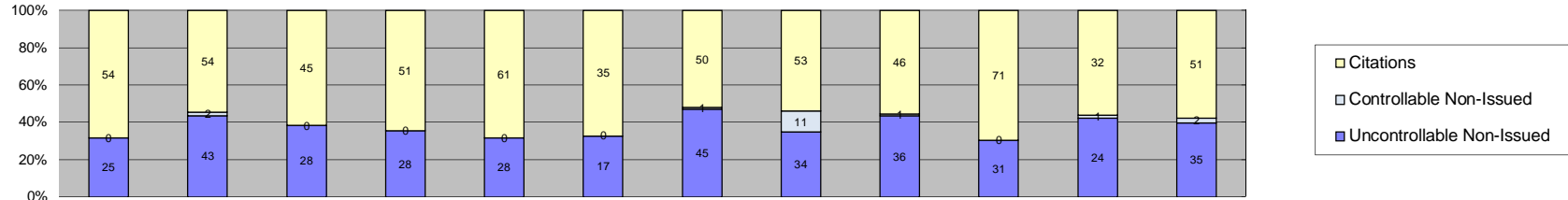
Events	Jan-12	Feb-12	Mar-12	Apr-12	May-12	Jun-12	Jul-12	Aug-12	Sep-12	Oct-12	Nov-12	Dec-12	Year to Date Average		2011 Average	
													Quantity	%	Quantity	%
Non-Violations	0	20	0	0	0	0	0	0	0	24	2	0	15	47%	21	45%
Violations	0	17	0	0	0	0	0	0	0	18	0	0	18	53%	26	55%
Total:	0	37	0	0	0	0	0	0	0	42	2	0	33	100%	47	100%
Violations																
Uncontrollable Non-Issued	0	7	0	0	0	0	0	0	0	8	0	0	8	41%	11	42%
Controllable Non-Issued	0	2	0	0	0	0	0	0	0	0	0	0	2	11%	0	0%
Citations	0	8	0	0	0	0	0	0	0	10	0	0	9	49%	15	58%
Total:	0	17	0	0	0	0	0	0	0	18	0	0	19	100%	26	100%
Non-Violations																
Rear Axle Violation	0	0	0	0	0	0	0	0	0	0	0	0	0	0%	0	0%
Emergency Vehicle	0	1	0	0	0	0	0	0	0	2	0	0	2	9%	3	14%
Right Turn	0	12	0	0	0	0	0	0	0	8	1	0	7	44%	10	48%
No Violation Occurred	0	7	0	0	0	0	0	0	0	14	1	0	7	46%	8	38%
Total:	0	20	0	0	0	0	0	0	0	24	2	0	16	100%	21	100%
Uncontrollable Non-Issued Violations																
No Plate	0	5	0	0	0	0	0	0	0	5	0	0	5	59%	4	36%
Out of State Plate	0	1	0	0	0	0	0	0	0	0	0	0	1	12%	0	0%
Glare on Plate	0	0	0	0	0	0	0	0	0	0	0	0	0	0%	0	0%
Illegible Plate	0	0	0	0	0	0	0	0	0	0	0	0	0	0%	0	0%
Plate Obstructed	0	0	0	0	0	0	0	0	0	0	0	0	0	0%	0	0%
Windshield Glare	0	0	0	0	0	0	0	0	0	0	0	0	0	0%	1	9%
Driver Obstructed	0	0	0	0	0	0	0	0	0	0	0	0	0	0%	0	0%
Car Obstructed	0	0	0	0	0	0	0	0	0	0	0	0	0	0%	0	0%
No DMV Match Found	0	1	0	0	0	0	0	0	0	2	0	0	2	18%	5	45%
LASD Expired	0	0	0	0	0	0	0	0	0	0	0	0	0	0%	0	0%
LASD Return	0	0	0	0	0	0	0	0	0	1	0	0	1	12%	1	0
Yellow Interval Not Met	0	0	0	0	0	0	0	0	0	0	0	0	0	0%	0	0%
Other	0	0	0	0	0	0	0	0	0	0	0	0	0	0%	0	0%
Total:	0	7	0	0	0	0	0	0	0	8	0	0	9	100%	11	100%
Controllable Non-Issued Violations																
Framing of Plate	0	0	0	0	0	0	0	0	0	0	0	0	0	0%	0	0
Focus / Clarity of Plate	0	1	0	0	0	0	0	0	0	0	0	0	1	50%	0	0
Dark Interior	0	0	0	0	0	0	0	0	0	0	0	0	0	0%	0	0
Framing of Driver	0	0	0	0	0	0	0	0	0	0	0	0	0	0%	0	0
Focus / Clarity of Driver	0	0	0	0	0	0	0	0	0	0	0	0	0	0%	0	0
Framing of Car	0	1	0	0	0	0	0	0	0	0	0	0	1	50%	0	0
Operator / Data Error	0	0	0	0	0	0	0	0	0	0	0	0	0	0%	0	0
Exposure	0	0	0	0	0	0	0	0	0	0	0	0	0	0%	0	0
Equipment Malfunction	0	0	0	0	0	0	0	0	0	0	0	0	0	0%	0	0
ACS Expired	0	0	0	0	0	0	0	0	0	0	0	0	0	0%	0	0
Total:	0	2	0	0	0	0	0	0	0	0	0	0	2	100%	0	100%
Summary Metrics													Year to Date Average		2011 Average	
Daily Ave Vehicle Passes	0	10,970	0	0	0	0	0	0	0	12,644	0	0	11,807		4,720	
Ave Issued Speed	0	38	0	0	0	0	0	0	0	36	0	0	37		34	
Ave Issued Red Seconds	0	0.6	0	0	0	0	0	0	0	1.2	0	0	1		0.4	
Citation / Violation Iss Rate	0%	47%	0%	0%	0%	0%	0%	0%	0%	56%	0%	0%	51%		58%	
Controllable Iss Rate	0%	80%	0%	0%	0%	0%	0%	0%	0%	100%	0%	0%	90%		100%	



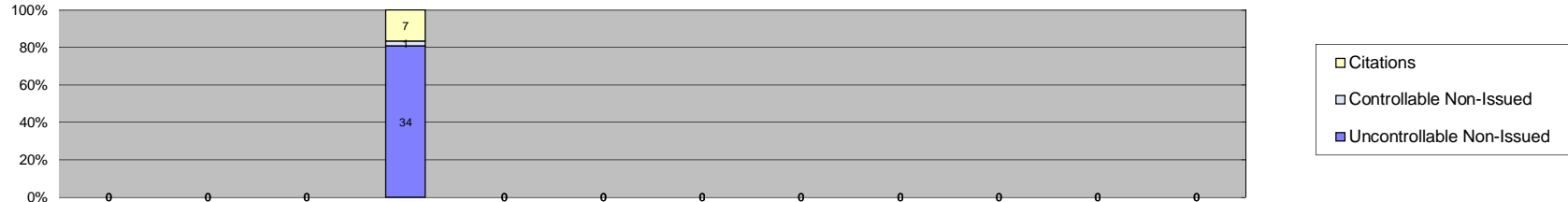
Events	Jan-12	Feb-12	Mar-12	Apr-12	May-12	Jun-12	Jul-12	Aug-12	Sep-12	Oct-12	Nov-12	Dec-12	Year to Date Average		2011 Average	
													Quantity	%	Quantity	%
Non-Violations	0	0	25	0	0	0	0	0	0	0	16	0	21	75%	16	52%
Violations	0	0	19	1	0	0	0	0	0	0	7	1	7	25%	15	48%
Total:	0	0	44	1	0	0	0	0	0	0	23	1	28	100%	31	100%
Violations																
Uncontrollable Non-Issued	0	0	9	1	0	0	0	0	0	0	5	1	4	40%	10	67%
Controllable Non-Issued	0	0	0	0	0	0	0	0	0	0	0	0	0	0%	0	0%
Citations	0	0	10	0	0	0	0	0	0	0	2	0	6	60%	5	33%
Total:	0	0	19	1	0	0	0	0	0	0	7	1	10	100%	15	100%
Non-Violations																
Rear Axle Violation	0	0	1	0	0	0	0	0	0	0	0	0	1	5%	0	0%
Emergency Vehicle	0	0	2	0	0	0	0	0	0	0	2	0	2	10%	4	25%
Right Turn	0	0	19	0	0	0	0	0	0	0	9	0	14	67%	8	50%
No Violation Occurred	0	0	3	0	0	0	0	0	0	0	5	0	4	19%	4	25%
Total:	0	0	25	0	0	0	0	0	0	0	16	0	21	100%	16	100%
Uncontrollable Non-Issued Violations																
No Plate	0	0	1	0	0	0	0	0	0	0	2	1	1	11%	3	30%
Out of State Plate	0	0	2	0	0	0	0	0	0	0	0	0	2	17%	2	20%
Glare on Plate	0	0	2	1	0	0	0	0	0	0	0	0	2	13%	0	0%
Illegible Plate	0	0	2	0	0	0	0	0	0	0	0	0	2	17%	0	0%
Plate Obstructed	0	0	0	0	0	0	0	0	0	0	0	0	0	0%	1	10%
Windshield Glare	0	0	0	0	0	0	0	0	0	0	0	0	0	0%	3	30%
Driver Obstructed	0	0	0	0	0	0	0	0	0	0	0	0	0	0%	1	10%
Car Obstructed	0	0	0	0	0	0	0	0	0	0	0	0	0	0%	0	0%
No DMV Match Found	0	0	0	0	0	0	0	0	0	0	2	0	2	17%	0	0%
LASD Expired	0	0	0	0	0	0	0	0	0	0	1	0	1	8%	0	0%
LASD Return	0	0	0	0	0	0	0	0	0	0	0	0	0	0%	0	0%
Yellow Interval Not Met	0	0	0	0	0	0	0	0	0	0	0	0	0	0%	0	0%
Other	0	0	2	0	0	0	0	0	0	0	0	0	2	17%	0	0%
Total:	0	0	9	1	0	0	0	0	0	0	5	1	12	100%	10	100%
Controllable Non-Issued Violations																
Framing of Plate	0	0	0	0	0	0	0	0	0	0	0	0	0	0	0	0
Focus / Clarity of Plate	0	0	0	0	0	0	0	0	0	0	0	0	0	0	0	0
Dark Interior	0	0	0	0	0	0	0	0	0	0	0	0	0	0	0	0
Framing of Driver	0	0	0	0	0	0	0	0	0	0	0	0	0	0	0	0
Focus / Clarity of Driver	0	0	0	0	0	0	0	0	0	0	0	0	0	0	0	0
Framing of Car	0	0	0	0	0	0	0	0	0	0	0	0	0	0	0	0
Operator / Data Error	0	0	0	0	0	0	0	0	0	0	0	0	0	0	0	0
Exposure	0	0	0	0	0	0	0	0	0	0	0	0	0	0	0	0
Equipment Malfunction	0	0	0	0	0	0	0	0	0	0	0	0	0	0	0	0
ACS Expired	0	0	0	0	0	0	0	0	0	0	0	0	0	0	0	0
Total:	0	0	0	0	0	0	0	0	0	0	0	0	0	0%	0	100%
Summary Metrics													Year to Date Average		2011 Average	
Daily Ave Vehicle Passes	0	0	12,023	13,018	0	0	0	0	0	0	11,093	0	9,034		6,372	
Ave Issued Speed	0	0	31	0	0	0	0	0	0	0	28	0	30		35	
Ave Issued Red Seconds	0	0	2.6	0	0	0	0	0	0	0	1.1	0	2		0.5	
Citation / Violation Iss Rate	0%	0%	53%	0%	0%	0%	0%	0%	0%	0%	29%	0%	41%		33%	
Controllable Iss Rate	0%	0%	100%	0%	0%	0%	0%	0%	0%	0%	100%	0%	100%		100%	



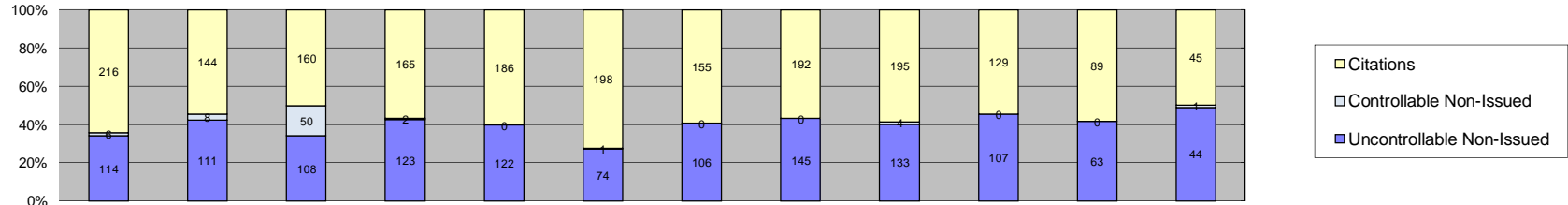
Events	Jan-12	Feb-12	Mar-12	Apr-12	May-12	Jun-12	Jul-12	Aug-12	Sep-12	Oct-12	Nov-12	Dec-12	Year to Date Average		2011 Average	
													Quantity	%	Quantity	%
Non-Violations	29	24	20	26	33	17	20	37	27	28	33	28	27	17%	30	22%
Violations	114	112	129	145	124	92	119	137	127	157	151	175	132	83%	106	78%
Total:	143	136	149	171	157	109	139	174	154	185	184	203	159	100%	137	100%
Violations																
Uncontrollable Non-Issued	42	35	32	57	40	22	39	49	44	55	53	68	45	34%	38	35%
Controllable Non-Issued	0	0	1	0	0	0	0	2	3	3	2	2	2	2%	1	1%
Citations	72	77	96	88	84	70	80	86	80	99	96	105	86	65%	68	64%
Total:	114	112	129	145	124	92	119	137	127	157	151	175	133	100%	107	100%
Non-Violations																
Rear Axle Violation	0	0	0	0	1	0	0	0	0	0	1	0	1	4%	0	0%
Emergency Vehicle	5	5	4	1	6	3	1	10	2	3	3	1	4	13%	4	13%
Right Turn	9	9	8	14	8	8	10	12	13	17	12	11	11	39%	12	38%
No Violation Occurred	15	10	8	11	18	6	9	15	12	8	17	16	12	44%	15	49%
Total:	29	24	20	26	33	17	20	37	27	28	33	28	28	100%	30	100%
Uncontrollable Non-Issued Violations																
No Plate	17	23	12	30	28	8	23	30	25	23	27	31	23	45%	20	38%
Out of State Plate	0	1	2	5	4	3	2	3	1	3	1	4	3	5%	3	6%
Glare on Plate	0	0	0	0	0	0	0	0	0	0	0	0	0	0%	0	0%
Illegible Plate	1	0	1	0	0	0	0	0	0	0	0	0	1	2%	1	2%
Plate Obstructed	1	0	1	2	0	1	1	0	0	3	1	3	2	3%	2	3%
Windshield Glare	3	1	2	2	1	1	0	3	3	6	4	11	3	7%	3	6%
Driver Obstructed	1	1	0	1	1	0	0	0	1	0	2	0	1	2%	2	3%
Car Obstructed	0	0	0	2	0	0	2	0	1	0	1	1	1	3%	2	4%
No DMV Match Found	17	7	10	15	5	6	8	9	10	15	13	7	10	20%	9	16%
LASD Expired	0	0	0	0	1	0	0	0	0	0	2	5	3	5%	1	2%
LASD Return	1	2	4	0	0	3	3	3	2	5	2	5	3	6%	3	63%
Yellow Interval Not Met	0	0	0	0	0	0	0	0	0	0	0	0	0	0%	0	0%
Other	1	0	0	0	0	0	0	1	1	0	0	1	1	2%	8	15%
Total:	42	35	32	57	40	22	39	49	44	55	53	68	51	100%	52	100%
Controllable Non-Issued Violations																
Framing of Plate	0	0	0	0	0	0	0	0	0	0	0	0	0	0%	0	0%
Focus / Clarity of Plate	0	0	0	0	0	0	0	0	0	0	0	0	0	0%	1	25%
Dark Interior	0	0	1	0	0	0	0	0	0	2	2	1	2	27%	1	25%
Framing of Driver	0	0	0	0	0	0	0	0	0	0	0	0	0	0%	0	0%
Focus / Clarity of Driver	0	0	0	0	0	0	0	0	0	0	0	0	0	0%	0	0%
Framing of Car	0	0	0	0	0	0	0	0	0	0	0	0	0	0%	1	25%
Operator / Data Error	0	0	0	0	0	0	0	2	2	0	0	0	2	36%	0	0%
Exposure	0	0	0	0	0	0	0	0	0	0	0	0	0	0%	0	0%
Equipment Malfunction	0	0	0	0	0	0	0	0	1	1	0	0	1	18%	0	0%
ACS Expired	0	0	0	0	0	0	0	0	0	0	0	1	1	18%	1	25%
Total:	0	0	1	0	0	0	0	2	3	3	2	2	6	100%	4	100%
Summary Metrics													Year to Date Average		2011 Average	
Daily Ave Vehicle Passes	14,483	13,991	14,234	14,091	10,413	7,724	11,115	11,123	11,971	14,598	12,677	13,592	12,501		14,113	
Ave Issued Speed	38	40	37	37	38	39	39	38	39	37	39	38	38		38	
Ave Issued Red Seconds	0.7	0.7	0.9	0.4	0.8	0.6	0.4	1.2	0.4	0.9	0.4	0.4	1		0.8	
Citation / Violation Iss Rate	63%	69%	74%	61%	68%	76%	67%	63%	63%	63%	64%	60%	66%		64%	
Controllable Iss Rate	100%	100%	99%	100%	100%	100%	100%	98%	96%	97%	98%	98%	99%		99%	



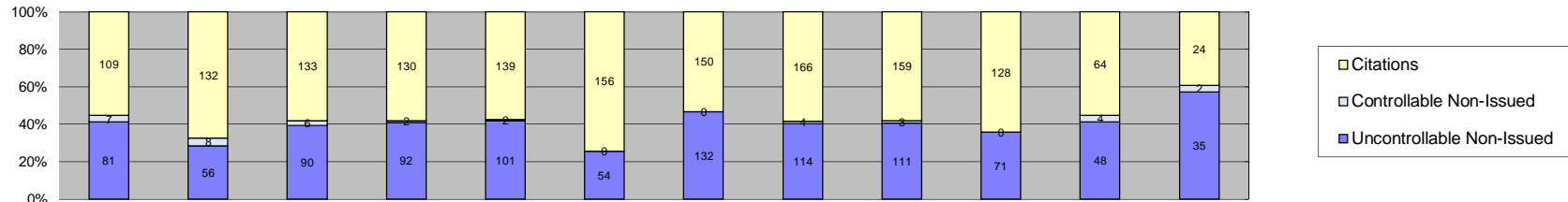
Events	2012												Year to Date Average		2011 Average	
	Jan-12	Feb-12	Mar-12	Apr-12	May-12	Jun-12	Jul-12	Aug-12	Sep-12	Oct-12	Nov-12	Dec-12	Quantity	%	Quantity	%
Non-Violations	105	130	125	116	81	35	101	141	117	107	70	114	104	56%	87	55%
Violations	79	99	73	79	89	52	96	98	83	102	57	88	83	44%	70	45%
Total:	184	229	198	195	170	87	197	239	200	209	127	202	186	100%	157	100%
Violations																
Uncontrollable Non-Issued	25	43	28	28	28	17	45	34	36	31	24	35	31	37%	25	36%
Controllable Non-Issued	0	2	0	0	0	0	1	11	1	0	1	2	3	4%	1	2%
Citations	54	54	45	51	61	35	50	53	46	71	32	51	50	60%	44	62%
Total:	79	99	73	79	89	52	96	98	83	102	57	88	84	100%	71	100%
Non-Violations																
Rear Axle Violation	0	0	0	0	0	0	0	1	0	0	0	1	1	1%	0	0%
Emergency Vehicle	12	18	26	14	7	0	8	20	10	9	4	11	13	12%	12	14%
Right Turn	65	81	77	73	52	22	71	106	85	72	54	79	70	66%	55	64%
No Violation Occurred	28	31	22	29	22	13	22	14	22	26	12	23	22	21%	20	23%
Total:	105	130	125	116	81	35	101	141	117	107	70	114	105	100%	87	100%
Uncontrollable Non-Issued Violations																
No Plate	10	25	11	13	15	7	18	14	19	18	12	14	15	33%	13	31%
Out of State Plate	0	2	1	4	3	1	3	2	6	1	0	2	3	6%	2	6%
Glare on Plate	0	0	2	0	1	0	5	1	2	0	0	0	2	5%	1	2%
Illegible Plate	0	2	0	2	0	0	1	0	1	2	0	1	2	3%	1	3%
Plate Obstructed	2	3	2	2	1	0	1	1	1	1	0	0	2	4%	1	3%
Windshield Glare	0	1	0	0	2	0	3	5	0	3	0	1	3	6%	1	3%
Driver Obstructed	0	0	0	0	0	0	0	1	0	0	0	2	2	3%	2	4%
Car Obstructed	0	1	2	0	2	0	0	0	0	0	1	0	2	3%	1	3%
No DMV Match Found	11	8	7	6	3	8	10	8	4	5	10	3	7	16%	5	13%
LASD Expired	0	0	0	0	0	0	0	0	0	0	0	5	5	11%	0	0%
LASD Return	2	1	2	1	1	1	3	2	3	1	1	1	2	4%	1	33%
Yellow Interval Not Met	0	0	0	0	0	0	0	0	0	0	0	0	0	0%	0	0%
Other	0	0	1	0	0	0	1	0	0	0	0	6	3	6%	12	28%
Total:	25	43	28	28	28	17	45	34	36	31	24	35	44	100%	41	100%
Controllable Non-Issued Violations																
Framing of Plate	0	0	0	0	0	0	0	0	0	0	0	0	0	0%	0	0%
Focus / Clarity of Plate	0	0	0	0	0	0	0	0	0	0	0	0	0	0%	0	0%
Dark Interior	0	0	0	0	0	0	0	0	1	0	1	1	1	7%	1	33%
Framing of Driver	0	0	0	0	0	0	0	0	0	0	0	0	0	0%	0	0%
Focus / Clarity of Driver	0	0	0	0	0	0	0	0	0	0	0	0	0	0%	0	0%
Framing of Car	0	0	0	0	0	0	0	0	0	0	0	0	0	0%	0	0%
Operator / Data Error	0	0	0	0	0	0	0	11	0	0	0	0	11	76%	0	0%
Exposure	0	0	0	0	0	0	0	0	0	0	0	0	0	0%	0	0%
Equipment Malfunction	0	0	0	0	0	0	1	0	0	0	0	0	1	7%	1	33%
ACS Expired	0	2	0	0	0	0	0	0	0	0	0	1	2	10%	1	33%
Total:	0	2	0	0	0	0	1	11	1	0	1	2	15	100%	3	100%
Summary Metrics													Year to Date Average		2011 Average	
Daily Ave Vehicle Passes	16,090	15,913	14,779	14,726	11,653	6,967	15,292	14,928	15,549	15,804	12,724	14,735	14,097		15,338	
Ave Issued Speed	40	39	41	40	38	41	40	39	43	39	39	41	40		40	
Ave Issued Red Seconds	0.6	0.9	0.4	0.8	2.1	0.4	1.1	0.5	1.2	0.7	0.4	1.0	1		0.7	
Citation / Violation Iss Rate	68%	55%	62%	65%	69%	67%	52%	54%	55%	70%	56%	58%	61%		63%	
Controllable Iss Rate	100%	96%	100%	100%	100%	100%	98%	83%	98%	100%	97%	96%	97%		99%	



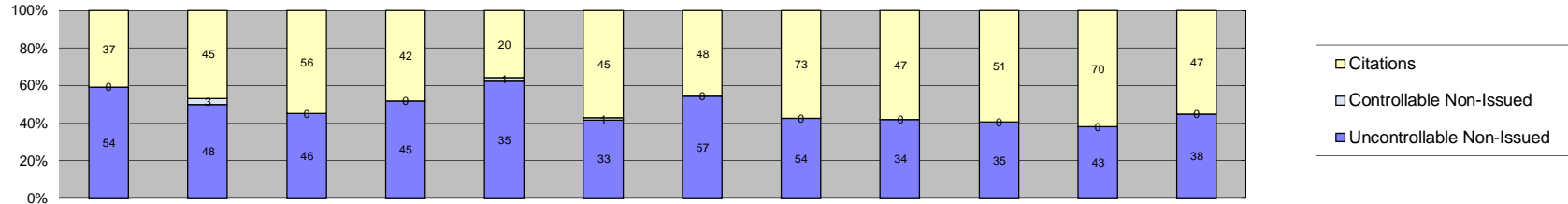
Events	Jan-12	Feb-12	Mar-12	Apr-12	May-12	Jun-12	Jul-12	Aug-12	Sep-12	Oct-12	Nov-12	Dec-12	Year to Date Average		2011 Average		
													Quantity	%	Quantity	%	
Non-Violations	0	0	0	29	0	0	0	0	0	0	0	0	0	29	41%	26	50%
Violations	0	0	0	42	0	0	0	0	0	0	0	0	0	42	59%	25	50%
Total:	0	0	0	71	0	0	0	0	0	0	0	0	0	71	100%	51	100%
Violations																	
Uncontrollable Non-Issued	0	0	0	34	0	0	0	0	0	0	0	0	0	34	81%	12	46%
Controllable Non-Issued	0	0	0	1	0	0	0	0	0	0	0	0	0	1	2%	3	12%
Citations	0	0	0	7	0	0	0	0	0	0	0	0	0	7	17%	11	42%
Total:	0	0	0	42	0	0	0	0	0	0	0	0	0	42	100%	25	100%
Non-Violations																	
Rear Axle Violation	0	0	0	1	0	0	0	0	0	0	0	0	0	1	3%	0	0%
Emergency Vehicle	0	0	0	1	0	0	0	0	0	0	0	0	0	1	3%	3	11%
Right Turn	0	0	0	13	0	0	0	0	0	0	0	0	0	13	45%	10	37%
No Violation Occurred	0	0	0	14	0	0	0	0	0	0	0	0	0	14	48%	14	52%
Total:	0	0	0	29	0	0	0	0	0	0	0	0	0	29	100%	27	100%
Uncontrollable Non-Issued Violations																	
No Plate	0	0	0	7	0	0	0	0	0	0	0	0	0	7	21%	3	19%
Out of State Plate	0	0	0	2	0	0	0	0	0	0	0	0	0	2	6%	1	6%
Glare on Plate	0	0	0	1	0	0	0	0	0	0	0	0	0	1	3%	3	19%
Illegible Plate	0	0	0	14	0	0	0	0	0	0	0	0	0	14	41%	0	0%
Plate Obstructed	0	0	0	2	0	0	0	0	0	0	0	0	0	2	6%	2	13%
Windshield Glare	0	0	0	6	0	0	0	0	0	0	0	0	0	6	18%	3	19%
Driver Obstructed	0	0	0	1	0	0	0	0	0	0	0	0	0	1	3%	0	0%
Car Obstructed	0	0	0	0	0	0	0	0	0	0	0	0	0	0	0%	0	0%
No DMV Match Found	0	0	0	1	0	0	0	0	0	0	0	0	0	1	3%	2	10%
LASD Expired	0	0	0	0	0	0	0	0	0	0	0	0	0	0	0%	0	0%
LASD Return	0	0	0	0	0	0	0	0	0	0	0	0	0	0	0%	1	22%
Yellow Interval Not Met	0	0	0	0	0	0	0	0	0	0	0	0	0	0	0%	0	0%
Other	0	0	0	0	0	0	0	0	0	0	0	0	0	0	0%	1	6%
Total:	0	0	0	34	0	0	0	0	0	0	0	0	0	34	100%	16	100%
Controllable Non-Issued Violations																	
Framing of Plate	0	0	0	1	0	0	0	0	0	0	0	0	0	1	100%	1	22%
Focus / Clarity of Plate	0	0	0	0	0	0	0	0	0	0	0	0	0	0	0%	1	22%
Dark Interior	0	0	0	0	0	0	0	0	0	0	0	0	0	0	0%	2	33%
Framing of Driver	0	0	0	0	0	0	0	0	0	0	0	0	0	0	0%	0	0%
Focus / Clarity of Driver	0	0	0	0	0	0	0	0	0	0	0	0	0	0	0%	0	0%
Framing of Car	0	0	0	0	0	0	0	0	0	0	0	0	0	0	0%	1	22%
Operator / Data Error	0	0	0	0	0	0	0	0	0	0	0	0	0	0	0%	0	0%
Exposure	0	0	0	0	0	0	0	0	0	0	0	0	0	0	0%	0	0%
Equipment Malfunction	0	0	0	0	0	0	0	0	0	0	0	0	0	0	0%	0	0%
ACS Expired	0	0	0	0	0	0	0	0	0	0	0	0	0	0	0%	0	0%
Total:	0	0	0	1	0	0	0	0	0	0	0	0	0	1	100%	5	100%
Summary Metrics													Year to Date Average		2011 Average		
Daily Ave Vehicle Passes	0	0	0	7,980	0	0	0	0	0	0	0	0	0	7,980		5,148	
Ave Issued Speed	0	0	0	29	0	0	0	0	0	0	0	0	0	29		29	
Ave Issued Red Seconds	0	0	0	0.4	0	0	0	0	0	0	0	0	0	0		0.7	
Citation / Violation Iss Rate	0%	0%	0%	17%	0%	0%	0%	0%	0%	0%	0%	0%	0%	17%		44%	
Controllable Iss Rate	0%	0%	0%	88%	0%	0%	0%	0%	0%	0%	0%	0%	0%	88%		74%	



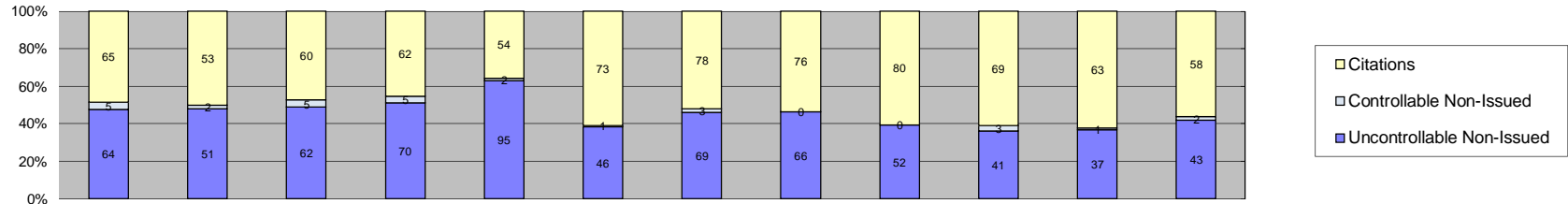
Events	Jan-12	Feb-12	Mar-12	Apr-12	May-12	Jun-12	Jul-12	Aug-12	Sep-12	Oct-12	Nov-12	Dec-12	Year to Date Average		2011 Average	
													Quantity	%	Quantity	%
Non-Violations	463	499	468	468	493	197	502	534	541	402	376	365	442	62%	401	65%
Violations	336	263	318	290	308	273	261	337	332	236	152	90	266	38%	218	35%
Total:	799	762	786	758	801	470	763	871	873	638	528	455	709	100%	618	100%
Violations																
Uncontrollable Non-Issued	114	111	108	123	122	74	106	145	133	107	63	44	104	38%	86	39%
Controllable Non-Issued	6	8	50	2	0	1	0	0	4	0	0	1	10	4%	11	5%
Citations	216	144	160	165	186	198	155	192	195	129	89	45	156	58%	121	56%
Total:	336	263	318	290	308	273	261	337	332	236	152	90	271	100%	218	100%
Non-Violations																
Rear Axle Violation	12	4	3	1	2	0	0	1	1	0	0	0	3	1%	2	1%
Emergency Vehicle	12	8	8	7	2	2	12	6	8	7	4	3	7	1%	9	2%
Right Turn	120	147	171	138	171	71	117	131	149	100	65	55	120	27%	138	34%
No Violation Occurred	319	340	286	322	318	124	373	396	383	295	307	307	314	71%	252	63%
Total:	463	499	468	468	493	197	502	534	541	402	376	365	444	100%	401	100%
Uncontrollable Non-Issued Violations																
No Plate	61	34	41	68	48	23	43	71	60	51	18	13	44	40%	35	38%
Out of State Plate	0	10	11	8	12	5	14	2	6	3	0	3	7	7%	7	7%
Glare on Plate	0	0	0	0	0	1	0	1	0	1	0	0	1	1%	1	1%
Illegible Plate	1	0	2	0	0	2	1	1	2	1	0	0	1	1%	1	1%
Plate Obstructed	2	3	3	1	4	0	3	4	5	2	2	0	3	3%	2	2%
Windshield Glare	7	17	26	24	16	7	10	32	21	21	16	11	17	16%	17	19%
Driver Obstructed	2	1	0	2	0	0	2	0	0	0	1	0	2	1%	2	2%
Car Obstructed	7	3	5	2	2	5	4	4	1	7	1	2	4	3%	3	3%
No DMV Match Found	28	29	15	16	31	27	23	18	32	18	20	11	22	20%	17	18%
LASD Expired	0	2	2	0	0	0	0	1	0	0	2	2	2	2%	0	0%
LASD Return	3	8	3	1	6	4	5	11	6	2	3	2	5	4%	4	28%
Yellow Interval Not Met	0	0	0	0	0	0	0	0	0	0	0	0	0	0%	1	1%
Other	3	4	0	1	3	0	1	0	0	1	0	0	2	2%	1	2%
Total:	114	111	108	123	122	74	106	145	133	107	63	44	110	100%	91	100%
Controllable Non-Issued Violations																
Framing of Plate	0	0	0	0	0	0	0	0	0	0	0	0	0	0%	0	0%
Focus / Clarity of Plate	0	0	0	0	0	0	0	0	0	0	0	0	0	0%	0	0%
Dark Interior	2	0	5	1	0	0	0	0	3	0	0	0	3	17%	4	28%
Framing of Driver	0	0	0	0	0	0	0	0	0	0	0	0	0	0%	0	0%
Focus / Clarity of Driver	0	2	1	0	0	0	0	0	0	0	0	0	2	9%	1	10%
Framing of Car	0	0	0	0	0	0	0	0	0	0	0	0	0	0%	0	0%
Operator / Data Error	0	0	0	0	0	0	0	0	0	0	0	0	0	0%	2	14%
Exposure	0	0	0	0	0	0	0	0	0	0	0	0	0	0%	0	0%
Equipment Malfunction	4	6	44	1	0	0	0	0	1	0	0	0	11	68%	7	48%
ACS Expired	0	0	0	0	0	1	0	0	0	0	0	1	1	6%	0	0%
Total:	6	8	50	2	0	1	0	0	4	0	0	1	16	100%	14	100%
Summary Metrics													Year to Date Average		2011 Average	
Daily Ave Vehicle Passes	15,117	17,427	16,422	15,340	14,968	14,081	14,926	14,729	17,418	13,636	16,414	16,169	15,554		15,457	
Ave Issued Speed	28	28	30	29	30	29	28	28	23	30	32	32	29		29	
Ave Issued Red Seconds	0.7	0.5	0.5	0.6	0.5	0.5	0.5	0.5	0.4	0.8	0.6	0.7	1		0.6	
Citation / Violation Iss Rate	64%	55%	50%	57%	60%	73%	59%	57%	59%	55%	59%	50%	58%		55%	
Controllable Iss Rate	97%	95%	76%	99%	100%	99%	100%	100%	98%	100%	100%	98%	97%		91%	



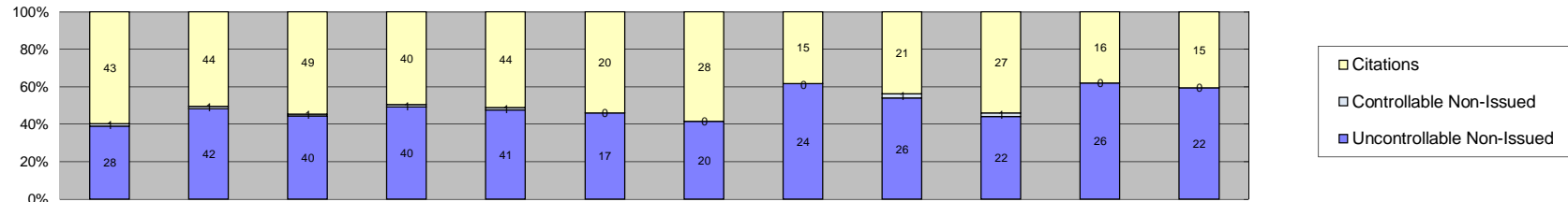
Events	Jan-12	Feb-12	Mar-12	Apr-12	May-12	Jun-12	Jul-12	Aug-12	Sep-12	Oct-12	Nov-12	Dec-12	Year to Date Average		2011 Average	
													Quantity	%	Quantity	%
Non-Violations	526	494	619	719	742	327	643	620	664	617	463	433	572	73%	579	77%
Violations	197	196	229	224	242	210	282	284	273	199	116	61	209	27%	172	23%
Total:	723	690	848	943	984	537	925	904	937	816	579	494	782	100%	752	100%
Violations																
Uncontrollable Non-Issued	81	56	90	92	101	54	132	114	111	71	48	35	82	39%	69	40%
Controllable Non-Issued	7	8	6	2	2	0	0	4	3	0	4	2	4	2%	6	3%
Citations	109	132	133	130	139	156	150	166	159	128	64	24	124	59%	97	56%
Total:	197	196	229	224	242	210	282	284	273	199	116	61	210	100%	172	100%
Non-Violations																
Rear Axle Violation	1	0	5	4	11	1	2	1	0	0	0	0	4	1%	2	0%
Emergency Vehicle	13	8	11	10	8	2	5	11	13	15	14	7	10	2%	10	2%
Right Turn	235	253	309	400	365	169	311	361	374	323	205	194	292	51%	266	46%
No Violation Occurred	277	233	294	305	358	155	325	247	277	279	244	232	269	47%	301	52%
Total:	526	494	619	719	742	327	643	620	664	617	463	433	574	100%	580	100%
Uncontrollable Non-Issued Violations																
No Plate	39	24	48	49	45	20	56	51	49	36	25	22	39	44%	33	43%
Out of State Plate	1	7	5	11	9	9	16	2	6	4	0	2	7	7%	6	8%
Glare on Plate	0	0	0	0	1	0	2	0	1	0	0	0	1	2%	0	0%
Illegible Plate	0	0	0	1	2	1	1	3	2	0	0	0	2	2%	2	3%
Plate Obstructed	3	1	1	3	2	1	5	2	3	1	0	1	2	2%	2	3%
Windshield Glare	1	4	10	10	20	9	14	16	8	8	3	2	9	10%	4	5%
Driver Obstructed	1	2	3	2	3	0	4	3	0	0	2	0	3	3%	2	3%
Car Obstructed	0	2	4	2	4	0	8	4	3	7	2	1	4	4%	3	4%
No DMV Match Found	34	12	17	11	9	8	15	26	34	13	14	4	16	19%	15	19%
LASD Expired	0	2	1	0	0	1	0	2	0	0	1	3	2	2%	1	1%
LASD Return	2	2	1	3	6	5	10	5	5	2	1	0	4	4%	4	24%
Yellow Interval Not Met	0	0	0	0	0	0	0	0	0	0	0	0	0	0%	0	0%
Other	0	0	0	0	0	0	1	0	0	0	0	0	1	1%	3	4%
Total:	81	56	90	92	101	54	132	114	111	71	48	35	88	100%	76	100%
Controllable Non-Issued Violations																
Framing of Plate	0	0	1	1	0	0	0	1	1	0	0	0	1	9%	1	6%
Focus / Clarity of Plate	0	0	1	0	0	0	0	0	0	0	0	0	1	9%	1	6%
Dark Interior	2	6	4	1	2	0	0	1	2	0	2	0	3	22%	4	21%
Framing of Driver	0	0	0	0	0	0	0	0	0	0	0	0	0	0%	0	0%
Focus / Clarity of Driver	0	1	0	0	0	0	0	0	0	0	1	0	1	9%	0	0%
Framing of Car	1	0	0	0	0	0	0	0	0	0	0	0	1	9%	1	6%
Operator / Data Error	0	0	0	0	0	0	0	0	0	0	0	0	0	0%	0	0%
Exposure	1	0	0	0	0	0	0	2	0	0	0	0	2	13%	1	6%
Equipment Malfunction	3	0	0	0	0	0	0	0	0	0	1	0	2	17%	9	50%
ACS Expired	0	1	0	0	0	0	0	0	0	0	0	2	2	13%	1	6%
Total:	7	8	6	2	2	0	0	4	3	0	4	2	12	100%	18	100%
Summary Metrics													Year to Date Average		2011 Average	
Daily Ave Vehicle Passes	16,248	16,495	19,441	17,276	16,835	15,654	16,231	15,844	19,386	17,562	18,034	17,811	17,235		16,382	
Ave Issued Speed	32	32	31	32	32	30	32	32	30	31	32	36	32		32	
Ave Issued Red Seconds	0.5	0.5	0.5	0.6	0.5	0.6	0.5	0.5	0.5	0.6	0.9	0.6	1		0.5	
Citation / Violation Iss Rate	55%	67%	58%	58%	57%	74%	53%	58%	58%	64%	55%	39%	58%		56%	
Controllable Iss Rate	94%	94%	96%	98%	99%	100%	100%	98%	98%	100%	94%	92%	97%		94%	



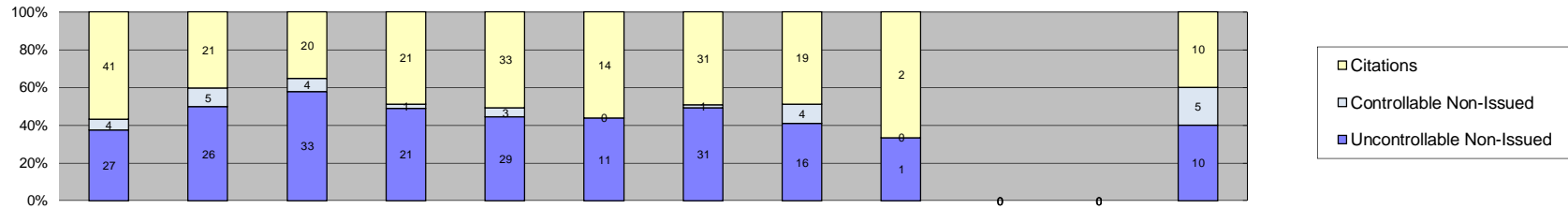
Events	Jan-12	Feb-12	Mar-12	Apr-12	May-12	Jun-12	Jul-12	Aug-12	Sep-12	Oct-12	Nov-12	Dec-12	Year to Date Average		2011 Average	
													Quantity	%	Quantity	%
Non-Violations	673	622	676	686	735	312	611	635	591	583	646	655	619	87%	1,041	92%
Violations	91	96	102	87	56	79	105	127	81	86	113	85	92	13%	93	8%
Total:	764	718	778	773	791	391	716	762	672	669	759	740	711	100%	1,134	100%
Violations																
Uncontrollable Non-Issued	54	48	46	45	35	33	57	54	34	35	43	38	44	46%	56	59%
Controllable Non-Issued	0	3	0	0	1	1	0	0	0	0	0	0	2	2%	12	12%
Citations	37	45	56	42	20	45	48	73	47	51	70	47	48	52%	27	29%
Total:	91	96	102	87	56	79	105	127	81	86	113	85	94	100%	95	100%
Non-Violations																
Rear Axle Violation	0	0	0	1	0	0	1	1	0	0	0	0	1	0%	2	0%
Emergency Vehicle	4	9	9	5	8	6	8	8	5	2	5	9	7	1%	8	1%
Right Turn	339	317	337	369	396	136	287	371	287	299	212	246	300	48%	287	28%
No Violation Occurred	330	296	330	311	331	170	315	255	299	282	429	400	312	50%	744	71%
Total:	673	622	676	686	735	312	611	635	591	583	646	655	620	100%	1,041	100%
Uncontrollable Non-Issued Violations																
No Plate	25	17	18	13	14	11	21	20	12	19	19	17	17	33%	16	26%
Out of State Plate	1	1	4	1	3	1	4	1	0	1	0	2	2	4%	1	2%
Glare on Plate	1	1	0	0	1	1	2	1	0	1	0	0	1	2%	2	2%
Illegible Plate	2	1	2	4	1	0	2	1	0	0	0	1	2	3%	1	2%
Plate Obstructed	2	2	0	2	1	0	2	1	0	0	2	0	2	3%	1	2%
Windshield Glare	1	6	5	11	7	4	9	10	9	7	4	4	6	12%	8	13%
Driver Obstructed	0	1	0	0	0	0	2	1	1	0	0	0	1	2%	1	2%
Car Obstructed	3	1	2	5	4	4	5	2	5	1	1	3	3	6%	8	13%
No DMV Match Found	12	5	6	3	1	7	4	11	2	6	12	5	6	12%	3	4%
LASD Expired	0	1	0	0	0	0	0	0	0	0	0	4	3	5%	1	2%
LASD Return	2	9	0	4	2	3	6	6	5	0	4	2	4	8%	3	8%
Yellow Interval Not Met	5	3	9	2	1	1	0	0	0	0	0	0	4	7%	13	21%
Other	0	0	0	0	0	1	0	0	0	0	1	0	1	2%	4	6%
Total:	54	48	46	45	35	33	57	54	34	35	43	38	52	100%	62	100%
Controllable Non-Issued Violations																
Framing of Plate	0	0	0	0	0	0	0	0	0	0	0	0	0	0%	1	3%
Focus / Clarity of Plate	0	1	0	0	0	0	0	0	0	0	0	0	1	20%	1	3%
Dark Interior	0	2	0	0	0	0	0	0	0	0	0	0	2	40%	4	10%
Framing of Driver	0	0	0	0	0	0	0	0	0	0	0	0	0	0%	0	0%
Focus / Clarity of Driver	0	0	0	0	0	0	0	0	0	0	0	0	0	0%	0	0%
Framing of Car	0	0	0	0	0	0	0	0	0	0	0	0	0	0%	0	0%
Operator / Data Error	0	0	0	0	0	0	0	0	0	0	0	0	0	0%	1	3%
Exposure	0	0	0	0	0	0	0	0	0	0	0	0	0	0%	28	70%
Equipment Malfunction	0	0	0	0	1	0	0	0	0	0	0	0	1	20%	5	12%
ACS Expired	0	0	0	0	0	1	0	0	0	0	0	0	1	20%	0	0%
Total:	0	3	0	0	1	1	0	0	0	0	0	0	5	100%	39	100%
Summary Metrics													Year to Date Average		2011 Average	
Daily Ave Vehicle Passes	18,884	17,940	17,670	18,631	17,782	17,010	21,109	19,268	18,475	18,715	18,655	18,595	18,561		19,387	
Ave Issued Speed	30	28	30	27	29	27	28	28	29	28	29	29	29		28	
Ave Issued Red Seconds	0.8	1.2	0.7	0.5	0.4	1.0	0.5	0.6	0.5	0.5	1.0	1.9	1		1.2	
Citation / Violation Iss Rate	41%	47%	55%	48%	36%	57%	46%	57%	58%	59%	62%	55%	52%		30%	
Controllable Iss Rate	100%	94%	100%	100%	95%	98%	100%	100%	100%	100%	100%	100%	99%		79%	



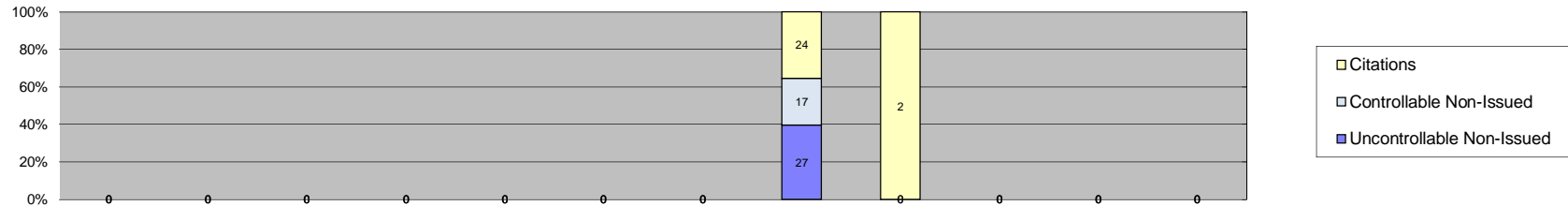
Events	Jan-12	Feb-12	Mar-12	Apr-12	May-12	Jun-12	Jul-12	Aug-12	Sep-12	Oct-12	Nov-12	Dec-12	Year to Date Average		2011 Average	
													Quantity	%	Quantity	%
Non-Violations	33	33	42	39	47	20	38	56	45	48	26	32	38	23%	30	22%
Violations	134	106	127	137	151	120	150	142	132	113	101	103	126	77%	106	78%
Total:	167	139	169	176	198	140	188	198	177	161	127	135	165	100%	136	100%
Violations																
Uncontrollable Non-Issued	64	51	62	70	95	46	69	66	52	41	37	43	58	46%	56	53%
Controllable Non-Issued	5	2	5	5	2	1	3	0	0	3	1	2	3	2%	4	4%
Citations	65	53	60	62	54	73	78	76	80	69	63	58	66	52%	46	43%
Total:	134	106	127	137	151	120	150	142	132	113	101	103	127	100%	106	100%
Non-Violations																
Rear Axle Violation	3	2	1	1	1	0	3	2	2	1	1	2	2	4%	2	6%
Emergency Vehicle	9	11	12	11	6	6	5	12	8	6	7	6	8	21%	8	25%
Right Turn	6	5	4	6	15	2	5	11	8	19	4	6	8	20%	6	18%
No Violation Occurred	15	15	25	21	25	12	25	31	27	22	14	18	21	54%	16	51%
Total:	33	33	42	39	47	20	38	56	45	48	26	32	38	100%	31	100%
Uncontrollable Non-Issued Violations																
No Plate	18	19	24	21	29	8	27	24	26	20	14	17	21	29%	15	24%
Out of State Plate	0	2	5	2	2	2	2	0	2	0	0	0	2	3%	1	2%
Glare on Plate	0	1	0	0	4	1	2	1	0	2	0	0	2	3%	2	4%
Illegible Plate	3	1	3	2	1	3	1	0	0	0	5	2	2	3%	2	2%
Plate Obstructed	2	2	0	4	3	1	0	3	2	2	2	1	2	3%	1	2%
Windshield Glare	0	2	3	12	23	15	18	21	2	2	1	2	9	13%	7	11%
Driver Obstructed	1	1	0	1	0	1	0	0	2	0	2	2	1	2%	1	2%
Car Obstructed	3	3	3	6	6	3	2	5	5	5	3	4	4	6%	2	4%
No DMV Match Found	13	4	9	10	16	4	9	6	7	7	8	5	8	12%	5	7%
LASD Expired	0	1	0	0	0	0	0	0	0	0	0	7	4	6%	1	2%
LASD Return	5	1	2	4	7	6	7	5	5	3	1	3	4	6%	2	18%
Yellow Interval Not Met	19	14	13	8	4	2	1	0	0	0	0	0	9	12%	22	35%
Other	0	0	0	0	0	0	0	1	1	0	1	0	1	1%	1	2%
Total:	64	51	62	70	95	46	69	66	52	41	37	43	70	100%	63	100%
Controllable Non-Issued Violations																
Framing of Plate	0	0	0	1	0	0	0	0	0	1	0	0	1	12%	2	18%
Focus / Clarity of Plate	0	0	0	1	0	0	0	0	0	0	1	0	1	12%	1	9%
Dark Interior	1	1	1	1	2	0	1	0	0	0	0	1	1	13%	2	20%
Framing of Driver	2	0	0	1	0	1	0	0	0	0	0	0	1	16%	1	9%
Focus / Clarity of Driver	0	0	0	0	0	0	0	0	0	0	0	0	0	0%	1	9%
Framing of Car	2	0	4	1	0	0	2	0	0	1	0	0	2	24%	2	16%
Operator / Data Error	0	0	0	0	0	0	0	0	0	1	0	0	1	12%	0	0%
Exposure	0	0	0	0	0	0	0	0	0	0	0	0	0	0%	0	0%
Equipment Malfunction	0	0	0	0	0	0	0	0	0	0	0	0	0	0%	1	9%
ACS Expired	0	1	0	0	0	0	0	0	0	0	0	1	1	12%	1	9%
Total:	5	2	5	5	2	1	3	0	0	3	1	2	8	100%	11	100%
Summary Metrics													Year to Date Average		2011 Average	
Daily Ave Vehicle Passes	18,090	16,993	17,564	17,515	16,970	15,327	19,173	23,099	17,906	18,357	16,753	17,774	17,960		17,798	
Ave Issued Speed	31	30	30	32	32	30	30	31	29	30	32	33	31		31	
Ave Issued Red Seconds	0.9	0.7	0.7	1.1	0.6	0.6	1.2	0.9	1.2	1.3	0.6	0.5	1		1.1	
Citation / Violation Iss Rate	49%	50%	47%	45%	36%	61%	52%	54%	61%	61%	62%	56%	53%		43%	
Controllable Iss Rate	93%	96%	92%	93%	96%	99%	96%	100%	100%	96%	98%	97%	96%		93%	



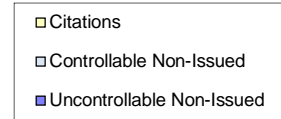
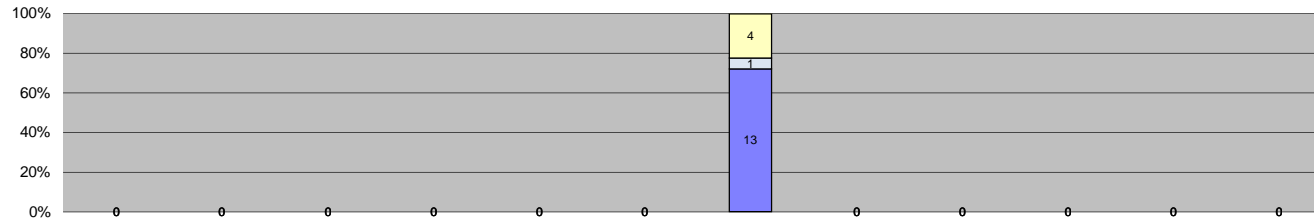
Events	Jan-12	Feb-12	Mar-12	Apr-12	May-12	Jun-12	Jul-12	Aug-12	Sep-12	Oct-12	Nov-12	Dec-12	Year to Date Average		2011 Average	
													Quantity	%	Quantity	%
Non-Violations	18	9	12	17	14	9	10	7	14	9	13	3	11	16%	12	19%
Violations	72	87	90	81	86	37	48	39	48	50	42	37	60	84%	51	81%
Total:	90	96	102	98	100	46	58	46	62	59	55	40	71	100%	62	100%
Violations																
Uncontrollable Non-Issued	28	42	40	40	41	17	20	24	26	22	26	22	29	48%	24	46%
Controllable Non-Issued	1	1	1	1	1	0	0	0	1	1	0	0	1	2%	3	6%
Citations	43	44	49	40	44	20	28	15	21	27	16	15	30	50%	25	48%
Total:	72	87	90	81	86	37	48	39	48	50	42	37	60	100%	52	100%
Non-Violations																
Rear Axle Violation	0	0	3	5	4	1	2	0	0	1	0	0	3	19%	1	10%
Emergency Vehicle	3	2	0	3	3	1	0	0	3	2	2	0	2	17%	2	15%
Right Turn	0	0	0	1	0	0	0	0	0	0	0	0	1	7%	1	8%
No Violation Occurred	15	7	9	8	7	7	8	7	11	6	11	3	8	58%	9	68%
Total:	18	9	12	17	14	9	10	7	14	9	13	3	14	100%	13	100%
Uncontrollable Non-Issued Violations																
No Plate	11	14	16	14	19	5	7	14	13	10	7	9	12	33%	8	18%
Out of State Plate	1	8	3	4	3	4	2	1	0	0	0	1	3	9%	2	4%
Glare on Plate	0	0	2	0	1	0	2	3	2	1	2	1	2	5%	1	2%
Illegible Plate	1	1	1	1	0	0	0	0	1	0	2	0	1	3%	1	2%
Plate Obstructed	2	2	1	3	4	0	3	1	1	2	0	3	2	6%	2	4%
Windshield Glare	2	5	5	7	4	1	1	0	1	2	5	0	3	9%	4	10%
Driver Obstructed	0	0	1	0	1	0	0	0	0	0	0	0	1	3%	1	3%
Car Obstructed	5	6	3	3	1	1	3	2	2	3	5	2	3	9%	3	7%
No DMV Match Found	5	5	5	7	7	4	1	1	2	3	3	3	4	11%	4	9%
LASD Expired	0	1	1	0	0	0	0	1	0	0	2	2	1	4%	1	2%
LASD Return	1	0	2	1	1	2	1	0	4	1	0	1	2	4%	1	18%
Yellow Interval Not Met	0	0	0	0	0	0	0	0	0	0	0	0	0	0%	0	0%
Other	0	0	0	0	0	0	0	1	0	0	0	0	1	3%	14	35%
Total:	28	42	40	40	41	17	20	24	26	22	26	22	35	100%	41	100%
Controllable Non-Issued Violations																
Framing of Plate	0	0	0	0	0	0	0	0	1	0	0	0	1	20%	0	0%
Focus / Clarity of Plate	0	0	0	1	0	0	0	0	0	0	0	0	1	20%	0	0%
Dark Interior	1	0	0	0	0	0	0	0	0	0	0	0	1	20%	3	47%
Framing of Driver	0	0	0	0	0	0	0	0	0	0	0	0	0	0%	0	0%
Focus / Clarity of Driver	0	0	0	0	0	0	0	0	0	0	0	0	0	0%	2	35%
Framing of Car	0	1	1	0	1	0	0	0	0	0	0	0	1	20%	1	18%
Operator / Data Error	0	0	0	0	0	0	0	0	0	0	0	0	0	0%	0	0%
Exposure	0	0	0	0	0	0	0	0	0	1	0	0	1	20%	0	0%
Equipment Malfunction	0	0	0	0	0	0	0	0	0	0	0	0	0	0%	0	0%
ACS Expired	0	0	0	0	0	0	0	0	0	0	0	0	0	0%	0	0%
Total:	1	1	1	1	1	0	0	0	1	1	0	0	5	100%	6	100%
Summary Metrics													Year to Date Average		2011 Average	
Daily Ave Vehicle Passes	11,305	11,865	12,104	10,850	10,665	9,815	10,745	8,876	12,284	10,561	11,129	11,330	10,961		10,993	
Ave Issued Speed	32	33	34	32	33	31	29	32	39	30	31	30	32		32	
Ave Issued Red Seconds	0.4	0.4	0.4	0.3	0.4	1.6	0.5	0.5	0.7	0.4	0.4	0.4	1		0.4	
Citation / Violation Iss Rate	60%	51%	54%	49%	51%	54%	58%	38%	44%	54%	38%	41%	49%		49%	
Controllable Iss Rate	98%	98%	98%	98%	98%	100%	100%	100%	95%	96%	100%	100%	98%		95%	



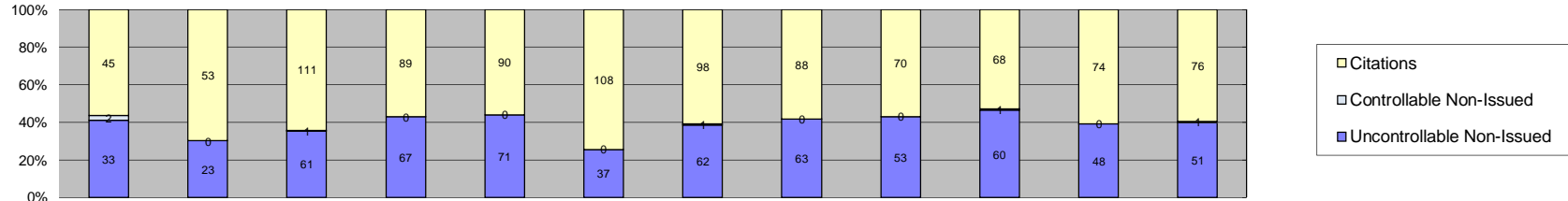
Events	Jan-12	Feb-12	Mar-12	Apr-12	May-12	Jun-12	Jul-12	Aug-12	Sep-12	Oct-12	Nov-12	Dec-12	Year to Date Average		2011 Average	
													Quantity	%	Quantity	%
Non-Violations	33	26	19	26	25	13	27	37	4	0	0	12	22	33%	26	36%
Violations	72	52	57	43	65	25	63	39	3	0	0	25	44	67%	46	64%
Total:	105	78	76	69	90	38	90	76	7	0	0	37	67	100%	72	100%
Violations																
Uncontrollable Non-Issued	27	26	33	21	29	11	31	16	1	0	0	10	21	45%	22	47%
Controllable Non-Issued	4	5	4	1	3	0	1	4	0	0	0	5	3	7%	2	5%
Citations	41	21	20	21	33	14	31	19	2	0	0	10	21	47%	22	48%
Total:	72	52	57	43	65	25	63	39	3	0	0	25	45	100%	47	100%
Non-Violations																
Rear Axle Violation	2	0	0	1	2	1	1	1	0	0	0	0	1	6%	1	4%
Emergency Vehicle	3	6	8	9	9	6	10	17	1	0	0	2	7	30%	8	29%
Right Turn	4	4	4	6	6	1	4	9	3	0	0	3	4	18%	5	18%
No Violation Occurred	24	16	7	10	8	5	12	10	0	0	0	7	11	46%	13	49%
Total:	33	26	19	26	25	13	27	37	4	0	0	12	24	100%	26	100%
Uncontrollable Non-Issued Violations																
No Plate	12	14	18	10	12	1	13	3	1	0	0	3	9	31%	8	19%
Out of State Plate	0	3	3	2	2	2	3	1	0	0	0	1	2	7%	3	6%
Glare on Plate	2	0	0	0	1	1	0	0	0	0	0	0	1	5%	2	4%
Illegible Plate	1	0	3	1	0	0	1	1	0	0	0	0	1	5%	1	2%
Plate Obstructed	1	0	0	1	2	0	3	1	0	0	0	0	2	6%	1	3%
Windshield Glare	2	0	2	1	2	2	3	2	0	0	0	0	2	7%	2	4%
Driver Obstructed	2	1	1	2	2	0	1	1	0	0	0	1	1	5%	2	4%
Car Obstructed	4	0	4	3	2	1	1	1	0	0	0	2	2	8%	2	4%
No DMV Match Found	1	6	1	1	5	3	3	5	0	0	0	1	3	10%	4	9%
LASD Expired	0	0	0	0	0	0	0	0	0	0	0	2	2	7%	0	0%
LASD Return	2	2	1	0	1	1	3	0	0	0	0	0	2	6%	2	25%
Yellow Interval Not Met	0	0	0	0	0	0	0	0	0	0	0	0	0	0%	0	0%
Other	0	0	0	0	0	0	0	1	0	0	0	0	1	4%	18	41%
Total:	27	26	33	21	29	11	31	16	1	0	0	10	28	100%	45	100%
Controllable Non-Issued Violations																
Framing of Plate	0	0	0	0	0	0	0	0	0	0	0	0	0	0%	1	13%
Focus / Clarity of Plate	0	1	0	0	0	0	0	0	0	0	0	0	1	7%	1	13%
Dark Interior	4	3	4	1	1	0	0	0	0	0	0	0	3	17%	2	24%
Framing of Driver	0	0	0	0	0	0	0	0	0	0	0	0	0	0%	1	13%
Focus / Clarity of Driver	0	0	0	0	0	0	0	0	0	0	0	0	0	0%	0	0%
Framing of Car	0	0	0	0	2	0	1	0	0	0	0	0	2	10%	0	0%
Operator / Data Error	0	0	0	0	0	0	0	4	0	0	0	0	4	26%	0	0%
Exposure	0	0	0	0	0	0	0	0	0	0	0	0	0	0%	3	38%
Equipment Malfunction	0	0	0	0	0	0	0	0	0	0	0	5	5	33%	0	0%
ACS Expired	0	1	0	0	0	0	0	0	0	0	0	0	1	7%	0	0%
Total:	4	5	4	1	3	0	1	4	0	0	0	5	15	100%	8	100%
Summary Metrics													Year to Date Average		2011 Average	
Daily Ave Vehicle Passes	10,799	11,218	11,525	10,009	10,145	9,566	11,031	10,551	10,082	0	0	9,716	10,464		10,725	
Ave Issued Speed	34	34	30	34	36	33	34	32	41	0	0	31	34		35	
Ave Issued Red Seconds	0.4	0.4	0.4	0.5	0.5	0.5	1.9	0.3	0.4	0	0	4.3	1		1.0	
Citation / Violation Iss Rate	57%	40%	35%	49%	51%	56%	49%	49%	67%	0%	0%	49%	49%		47%	
Controllable Iss Rate	91%	81%	83%	95%	92%	100%	97%	83%	100%	0%	0%	67%	89%		92%	



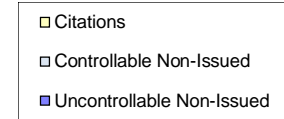
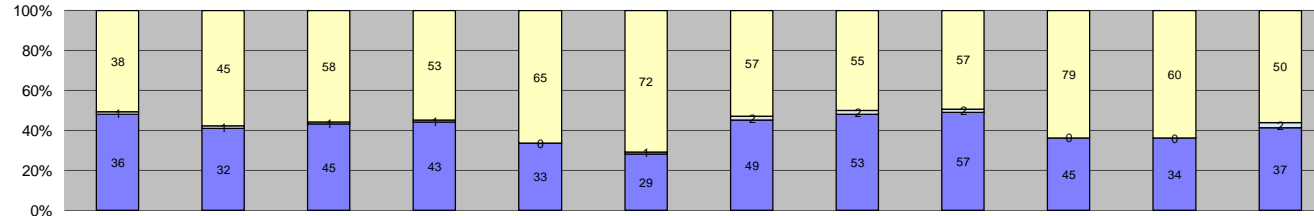
Events	Jan-12	Feb-12	Mar-12	Apr-12	May-12	Jun-12	Jul-12	Aug-12	Sep-12	Oct-12	Nov-12	Dec-12	Year to Date Average		2011 Average	
													Quantity	%	Quantity	%
Non-Violations	9	0	0	0	0	0	0	54	9	0	0	0	24	41%	49	79%
Violations	0	0	0	0	0	0	0	68	2	0	0	0	35	59%	13	21%
Total:	9	0	0	0	0	0	0	122	11	0	0	0	59	100%	62	100%
Violations																
Uncontrollable Non-Issued	0	0	0	0	0	0	0	27	0	0	0	0	27	47%	4	18%
Controllable Non-Issued	0	0	0	0	0	0	0	17	0	0	0	0	17	30%	10	45%
Citations	0	0	0	0	0	0	0	24	2	0	0	0	13	23%	8	36%
Total:	0	0	0	0	0	0	0	68	2	0	0	0	57	100%	22	100%
Non-Violations																
Rear Axle Violation	0	0	0	0	0	0	0	1	0	0	0	0	1	4%	1	2%
Emergency Vehicle	1	0	0	0	0	0	0	12	2	0	0	0	5	18%	11	21%
Right Turn	5	0	0	0	0	0	0	16	0	0	0	0	11	37%	9	17%
No Violation Occurred	3	0	0	0	0	0	0	25	7	0	0	0	12	41%	30	60%
Total:	9	0	0	0	0	0	0	54	9	0	0	0	28	100%	50	100%
Uncontrollable Non-Issued Violations																
No Plate	0	0	0	0	0	0	0	13	0	0	0	0	13	48%	3	38%
Out of State Plate	0	0	0	0	0	0	0	1	0	0	0	0	1	4%	0	0%
Glare on Plate	0	0	0	0	0	0	0	2	0	0	0	0	2	7%	0	0%
Illegible Plate	0	0	0	0	0	0	0	0	0	0	0	0	0	0%	0	0%
Plate Obstructed	0	0	0	0	0	0	0	3	0	0	0	0	3	11%	0	0%
Windshield Glare	0	0	0	0	0	0	0	1	0	0	0	0	1	4%	0	0%
Driver Obstructed	0	0	0	0	0	0	0	0	0	0	0	0	0	0%	0	0%
Car Obstructed	0	0	0	0	0	0	0	1	0	0	0	0	1	4%	1	13%
No DMV Match Found	0	0	0	0	0	0	0	5	0	0	0	0	5	19%	3	38%
LASD Expired	0	0	0	0	0	0	0	0	0	0	0	0	0	0%	0	0%
LASD Return	0	0	0	0	0	0	0	0	0	0	0	0	0	0%	0	0%
Yellow Interval Not Met	0	0	0	0	0	0	0	0	0	0	0	0	0	0%	0	0%
Other	0	0	0	0	0	0	0	1	0	0	0	0	1	4%	1	13%
Total:	0	0	0	0	0	0	0	27	0	0	0	0	27	100%	8	100%
Controllable Non-Issued Violations																
Framing of Plate	0	0	0	0	0	0	0	0	0	0	0	0	0	0%	0	0%
Focus / Clarity of Plate	0	0	0	0	0	0	0	0	0	0	0	0	0	0%	0	0%
Dark Interior	0	0	0	0	0	0	0	0	0	0	0	0	0	0%	0	0%
Framing of Driver	0	0	0	0	0	0	0	0	0	0	0	0	0	0%	0	0%
Focus / Clarity of Driver	0	0	0	0	0	0	0	0	0	0	0	0	0	0%	0	0%
Framing of Car	0	0	0	0	0	0	0	0	0	0	0	0	0	0%	0	0%
Operator / Data Error	0	0	0	0	0	0	0	17	0	0	0	0	17	100%	0	0%
Exposure	0	0	0	0	0	0	0	0	0	0	0	0	0	0%	0	0%
Equipment Malfunction	0	0	0	0	0	0	0	0	0	0	0	0	0	0%	10	100%
ACS Expired	0	0	0	0	0	0	0	0	0	0	0	0	0	0%	0	0%
Total:	0	0	0	0	0	0	0	17	0	0	0	0	17	100%	10	100%
Summary Metrics													Year to Date Average		2011 Average	
Daily Ave Vehicle Passes	0	0	0	0	0	0	0	15,354	15,203	0	0	0	15,279		10,627	
Ave Issued Speed	0	0	0	0	0	0	0	27	25	0	0	0	26		39	
Ave Issued Red Seconds	0	0	0	0	0	0	0	0.5	0.6	0	0	0	1		3.4	
Citation / Violation Iss Rate	0%	0%	0%	0%	0%	0%	0%	35%	100%	0%	0%	0%	68%		53%	
Controllable Iss Rate	0%	0%	0%	0%	0%	0%	0%	59%	100%	0%	0%	0%	79%		100%	



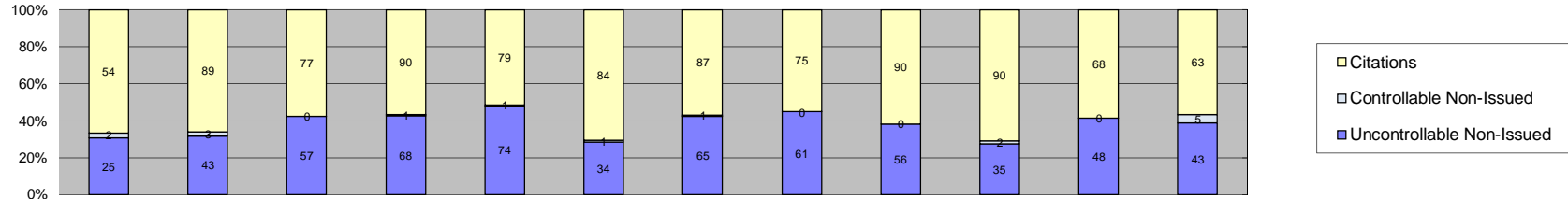
Events	Jan-12	Feb-12	Mar-12	Apr-12	May-12	Jun-12	Jul-12	Aug-12	Sep-12	Oct-12	Nov-12	Dec-12	Year to Date Average		2011 Average	
													Quantity	%	Quantity	%
Non-Violations	0	0	0	0	0	0	84	0	0	0	0	0	84	82%	58	60%
Violations	0	0	0	0	0	0	18	0	0	0	0	0	18	18%	39	40%
Total:	0	0	0	0	0	0	102	0	0	0	0	0	102	100%	97	100%
Violations																
Uncontrollable Non-Issued	0	0	0	0	0	0	13	0	0	0	0	0	13	72%	18	46%
Controllable Non-Issued	0	0	0	0	0	0	1	0	0	0	0	0	1	6%	3	6%
Citations	0	0	0	0	0	0	4	0	0	0	0	0	4	22%	19	47%
Total:	0	0	0	0	0	0	18	0	0	0	0	0	18	100%	39	100%
Non-Violations																
Rear Axle Violation	0	0	0	0	0	0	0	0	0	0	0	0	0	0%	2	3%
Emergency Vehicle	0	0	0	0	0	0	18	0	0	0	0	0	18	21%	16	21%
Right Turn	0	0	0	0	0	0	41	0	0	0	0	0	41	49%	32	40%
No Violation Occurred	0	0	0	0	0	0	25	0	0	0	0	0	25	30%	29	36%
Total:	0	0	0	0	0	0	84	0	0	0	0	0	84	100%	79	100%
Uncontrollable Non-Issued Violations																
No Plate	0	0	0	0	0	0	4	0	0	0	0	0	4	31%	8	38%
Out of State Plate	0	0	0	0	0	0	3	0	0	0	0	0	3	23%	3	14%
Glare on Plate	0	0	0	0	0	0	1	0	0	0	0	0	1	8%	4	19%
Illegible Plate	0	0	0	0	0	0	0	0	0	0	0	0	0	0%	1	5%
Plate Obstructed	0	0	0	0	0	0	1	0	0	0	0	0	1	8%	1	5%
Windshield Glare	0	0	0	0	0	0	1	0	0	0	0	0	1	8%	0	0%
Driver Obstructed	0	0	0	0	0	0	0	0	0	0	0	0	0	0%	1	5%
Car Obstructed	0	0	0	0	0	0	0	0	0	0	0	0	0	0%	1	5%
No DMV Match Found	0	0	0	0	0	0	1	0	0	0	0	0	1	8%	2	10%
LASD Expired	0	0	0	0	0	0	0	0	0	0	0	0	0	0%	0	0%
LASD Return	0	0	0	0	0	0	2	0	0	0	0	0	2	15%	0	0%
Yellow Interval Not Met	0	0	0	0	0	0	0	0	0	0	0	0	0	0%	0	0%
Other	0	0	0	0	0	0	0	0	0	0	0	0	0	0%	0	0%
Total:	0	0	0	0	0	0	13	0	0	0	0	0	13	100%	21	100%
Controllable Non-Issued Violations																
Framing of Plate	0	0	0	0	0	0	0	0	0	0	0	0	0	0%	2	50%
Focus / Clarity of Plate	0	0	0	0	0	0	1	0	0	0	0	0	1	100%	1	25%
Dark Interior	0	0	0	0	0	0	0	0	0	0	0	0	0	0%	0	0%
Framing of Driver	0	0	0	0	0	0	0	0	0	0	0	0	0	0%	0	0%
Focus / Clarity of Driver	0	0	0	0	0	0	0	0	0	0	0	0	0	0%	0	0%
Framing of Car	0	0	0	0	0	0	0	0	0	0	0	0	0	0%	1	25%
Operator / Data Error	0	0	0	0	0	0	0	0	0	0	0	0	0	0%	0	0%
Exposure	0	0	0	0	0	0	0	0	0	0	0	0	0	0%	0	0%
Equipment Malfunction	0	0	0	0	0	0	0	0	0	0	0	0	0	0%	0	0%
ACS Expired	0	0	0	0	0	0	0	0	0	0	0	0	0	0%	0	0%
Total:	0	0	0	0	0	0	1	0	0	0	0	0	1	100%	4	100%
Summary Metrics													Year to Date Average		2011 Average	
Daily Ave Vehicle Passes	0	0	0	0	0	0	14,550	0	0	0	0	0	14,550		9,244	
Ave Issued Speed	0	0	0	0	0	0	26	0	0	0	0	0	26		34	
Ave Issued Red Seconds	0	0	0	0	0	0	0.3	0	0	0	0	0	0		0.4	
Citation / Violation Iss Rate	0%	0%	0%	0%	0%	0%	22%	0%	0%	0%	0%	0%	22%		48%	
Controllable Iss Rate	0%	0%	0%	0%	0%	0%	80%	0%	0%	0%	0%	0%	80%		89%	



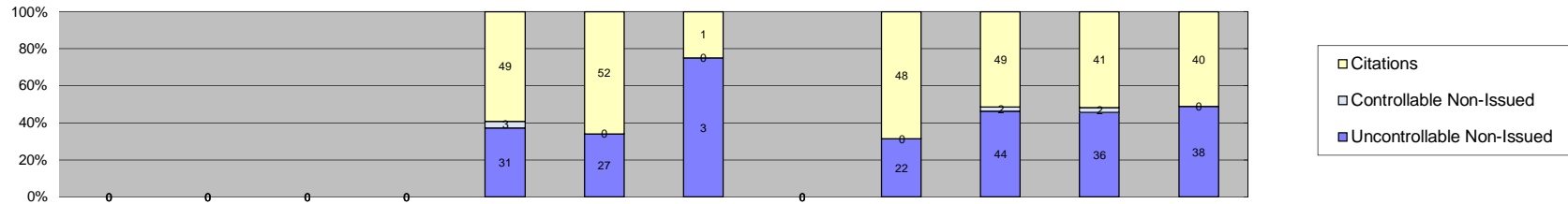
Events	Jan-12	Feb-12	Mar-12	Apr-12	May-12	Jun-12	Jul-12	Aug-12	Sep-12	Oct-12	Nov-12	Dec-12	Year to Date Average		2011 Average	
													Quantity	%	Quantity	%
Non-Violations	98	86	78	93	118	56	105	129	117	130	140	126	106	44%	112	48%
Violations	80	76	173	156	161	145	161	151	123	129	122	128	134	56%	119	52%
Total:	178	162	251	249	279	201	266	280	240	259	262	254	240	100%	231	100%
Violations																
Uncontrollable Non-Issued	33	23	61	67	71	37	62	63	53	60	48	51	52	39%	37	25%
Controllable Non-Issued	2	0	1	0	0	0	1	0	0	1	0	1	1	1%	66	45%
Citations	45	53	111	89	90	108	98	88	70	68	74	76	81	60%	44	30%
Total:	80	76	173	156	161	145	161	151	123	129	122	128	134	100%	147	100%
Non-Violations																
Rear Axle Violation	4	1	2	2	5	1	7	6	3	3	2	5	3	3%	3	3%
Emergency Vehicle	5	6	1	5	5	1	4	9	2	6	1	2	4	4%	5	4%
Right Turn	49	46	37	49	67	32	56	55	61	58	52	53	51	48%	42	37%
No Violation Occurred	40	33	38	37	41	22	38	59	51	63	85	66	48	45%	62	56%
Total:	98	86	78	93	118	56	105	129	117	130	140	126	106	100%	112	100%
Uncontrollable Non-Issued Violations																
No Plate	13	9	33	29	27	12	30	27	36	29	25	20	24	38%	16	29%
Out of State Plate	0	2	5	6	13	5	5	4	3	1	0	1	5	7%	3	5%
Glare on Plate	0	0	2	1	2	0	3	1	0	0	0	0	2	3%	1	2%
Illegible Plate	1	1	1	1	1	1	1	0	0	0	2	0	1	2%	1	2%
Plate Obstructed	4	1	2	4	1	1	2	2	0	1	2	2	2	3%	1	2%
Windshield Glare	0	0	3	11	7	0	6	1	2	2	0	2	4	7%	2	4%
Driver Obstructed	1	0	0	1	0	1	0	0	0	1	1	0	1	2%	1	2%
Car Obstructed	1	5	1	1	2	3	1	3	2	2	1	4	2	3%	4	7%
No DMV Match Found	13	5	13	11	15	12	9	25	10	23	15	10	13	21%	6	11%
LASD Expired	0	0	0	0	0	0	0	0	0	0	2	11	7	10%	0	0%
LASD Return	0	0	1	2	2	2	5	0	0	1	0	1	2	3%	1	1%
Yellow Interval Not Met	0	0	0	0	0	0	0	0	0	0	0	0	0	0%	0	0%
Other	0	0	0	0	1	0	0	0	0	0	0	0	1	2%	19	34%
Total:	33	23	61	67	71	37	62	63	53	60	48	51	64	100%	56	100%
Controllable Non-Issued Violations																
Framing of Plate	0	0	0	0	0	0	0	0	0	0	0	0	0	0%	0	0%
Focus / Clarity of Plate	0	0	0	0	0	0	0	0	0	0	0	0	0	0%	0	0%
Dark Interior	0	0	1	0	0	0	0	0	0	0	0	0	1	20%	1	0%
Framing of Driver	0	0	0	0	0	0	0	0	0	0	0	0	0	0%	1	0%
Focus / Clarity of Driver	0	0	0	0	0	0	0	0	0	0	0	0	0	0%	0	0%
Framing of Car	2	0	0	0	0	0	0	0	0	0	0	0	2	40%	7	3%
Operator / Data Error	0	0	0	0	0	0	0	0	0	0	0	0	0	0%	0	0%
Exposure	0	0	0	0	0	0	0	0	0	1	0	0	1	20%	1	0%
Equipment Malfunction	0	0	0	0	0	0	0	0	0	0	0	0	0	0%	223	95%
ACS Expired	0	0	0	0	0	0	1	0	0	0	0	1	1	20%	1	0%
Total:	2	0	1	0	0	0	1	0	0	1	0	1	5	100%	234	100%
Summary Metrics													Year to Date Average		2011 Average	
Daily Ave Vehicle Passes	16,094	18,548	18,536	15,880	15,813	14,852	16,203	17,045	18,618	16,995	17,492	17,244	16,943		16,581	
Ave Issued Speed	33	32	30	30	28	28	31	32	44	31	31	32	32		32	
Ave Issued Red Seconds	0.4	0.3	0.8	0.4	0.4	0.4	0.4	0.3	0.6	0.3	0.4	0.3	0		0.7	
Citation / Violation Iss Rate	56%	70%	64%	57%	56%	74%	61%	58%	57%	53%	61%	59%	61%		50%	
Controllable Iss Rate	96%	100%	99%	100%	100%	100%	99%	100%	100%	99%	100%	99%	99%		86%	



Events	2012												Year to Date Average		2011 Average	
	Jan-12	Feb-12	Mar-12	Apr-12	May-12	Jun-12	Jul-12	Aug-12	Sep-12	Oct-12	Nov-12	Dec-12	Quantity	%	Quantity	%
Non-Violations	226	235	319	301	300	142	68	261	270	283	297	330	253	72%	183	68%
Violations	75	78	104	97	98	102	108	110	116	124	94	89	100	28%	85	32%
Total:	301	313	423	398	398	244	176	371	386	407	391	419	352	100%	268	100%
Violations																
Uncontrollable Non-Issued	36	32	45	43	33	29	49	53	57	45	34	37	41	41%	45	51%
Controllable Non-Issued	1	1	1	1	0	1	2	2	2	0	0	2	1	1%	7	8%
Citations	38	45	58	53	65	72	57	55	57	79	60	50	57	57%	35	41%
Total:	75	78	104	97	98	102	108	110	116	124	94	89	100	100%	87	100%
Non-Violations																
Rear Axle Violation	0	1	0	1	3	0	0	1	1	0	1	0	1	1%	1	1%
Emergency Vehicle	11	7	6	7	7	1	3	7	8	13	8	11	7	3%	5	3%
Right Turn	57	62	75	83	81	48	21	79	82	79	37	44	62	25%	60	32%
No Violation Occurred	158	165	238	210	209	93	44	174	179	191	251	275	182	72%	118	64%
Total:	226	235	319	301	300	142	68	261	270	283	297	330	253	100%	184	100%
Uncontrollable Non-Issued Violations																
No Plate	19	14	17	28	13	7	20	29	25	18	18	19	19	37%	12	18%
Out of State Plate	1	3	6	2	3	2	4	1	7	4	0	1	3	6%	3	4%
Glare on Plate	0	0	0	0	0	0	0	0	0	1	0	0	1	2%	0	0%
Illegible Plate	0	1	0	1	1	0	1	0	0	0	0	0	1	2%	1	1%
Plate Obstructed	1	4	0	3	2	1	4	1	2	2	1	1	2	4%	1	2%
Windshield Glare	0	0	0	1	3	3	4	5	2	2	0	1	3	5%	2	3%
Driver Obstructed	0	0	0	0	0	0	0	0	1	0	0	0	1	2%	1	2%
Car Obstructed	2	1	5	4	2	1	2	0	2	3	1	3	2	5%	3	4%
No DMV Match Found	12	7	17	4	4	8	4	14	15	12	9	5	9	18%	7	10%
LASD Expired	0	0	0	0	0	0	0	0	0	0	2	7	5	9%	0	0%
LASD Return	1	2	0	0	3	7	1	2	2	3	2	0	3	5%	2	15%
Yellow Interval Not Met	0	0	0	0	0	0	0	0	0	0	0	0	0	0%	1	1%
Other	0	0	0	0	2	0	9	1	1	0	1	0	3	5%	34	51%
Total:	36	32	45	43	33	29	49	53	57	45	34	37	51	100%	68	100%
Controllable Non-Issued Violations																
Framing of Plate	0	0	0	0	0	0	0	0	0	0	0	0	0	0%	0	0%
Focus / Clarity of Plate	0	0	0	1	0	0	0	0	0	0	0	0	1	14%	1	8%
Dark Interior	1	1	0	0	0	1	0	2	1	0	0	1	1	16%	2	14%
Framing of Driver	0	0	0	0	0	0	0	0	0	0	0	1	1	14%	0	0%
Focus / Clarity of Driver	0	0	0	0	0	0	0	0	0	0	0	0	0	0%	0	0%
Framing of Car	0	0	0	0	0	0	0	0	0	0	0	0	0	0%	0	0%
Operator / Data Error	0	0	0	0	0	0	0	0	1	0	0	0	1	14%	0	0%
Exposure	0	0	0	0	0	0	2	0	0	0	0	0	2	28%	0	0%
Equipment Malfunction	0	0	0	0	0	0	0	0	0	0	0	0	0	0%	9	71%
ACS Expired	0	0	1	0	0	0	0	0	0	0	0	0	1	14%	1	8%
Total:	1	1	1	1	0	1	2	2	2	0	0	2	7	100%	13	100%
Summary Metrics																
Daily Ave Vehicle Passes	16,678	17,396	17,949	16,060	15,550	14,692	13,312	14,044	17,909	16,260	16,712	16,452	16,084		15,640	
Ave Issued Speed	32	34	32	30	31	33	30	32	30	31	31	30	31		30	
Ave Issued Red Seconds	1.6	0.4	0.8	0.3	0.3	0.4	0.4	0.3	0.4	0.3	0.5	0.4	1		0.5	
Citation / Violation Iss Rate	51%	58%	56%	55%	66%	71%	53%	50%	49%	64%	64%	56%	58%		46%	
Controllable Iss Rate	97%	98%	98%	98%	100%	99%	97%	96%	97%	100%	100%	96%	98%		91%	



Events	2012												Year to Date Average		2011 Average	
	Jan-12	Feb-12	Mar-12	Apr-12	May-12	Jun-12	Jul-12	Aug-12	Sep-12	Oct-12	Nov-12	Dec-12	Quantity	%	Quantity	%
Non-Violations	36	43	41	51	39	20	48	47	48	42	48	50	43	25%	40	31%
Violations	81	135	134	159	154	119	153	136	146	127	116	111	131	75%	91	69%
Total:	117	178	175	210	193	139	201	183	194	169	164	161	174	100%	131	100%
Violations																
Uncontrollable Non-Issued	25	43	57	68	74	34	65	61	56	35	48	43	51	39%	37	41%
Controllable Non-Issued	2	3	0	1	1	1	1	0	0	2	0	5	2	2%	2	2%
Citations	54	89	77	90	79	84	87	75	90	90	68	63	79	60%	52	57%
Total:	81	135	134	159	154	119	153	136	146	127	116	111	132	100%	91	100%
Non-Violations																
Rear Axle Violation	2	1	1	0	4	1	3	1	1	0	0	0	2	4%	3	6%
Emergency Vehicle	5	2	1	1	0	2	2	3	0	2	1	1	2	5%	3	8%
Right Turn	16	28	23	40	19	10	20	31	33	23	29	29	25	57%	25	59%
No Violation Occurred	13	12	16	10	16	7	23	12	14	17	18	20	15	34%	11	27%
Total:	36	43	41	51	39	20	48	47	48	42	48	50	44	100%	42	100%
Uncontrollable Non-Issued Violations																
No Plate	14	20	27	26	30	9	27	28	21	14	22	18	21	36%	17	33%
Out of State Plate	1	7	7	8	10	5	6	5	4	3	0	2	5	9%	5	10%
Glare on Plate	1	0	1	0	2	0	2	1	3	0	0	0	2	3%	1	2%
Illegible Plate	2	3	2	2	0	0	1	0	3	0	2	0	2	4%	1	2%
Plate Obstructed	0	0	1	1	0	0	2	3	1	1	1	1	1	2%	1	2%
Windshield Glare	0	0	1	6	18	7	15	6	3	4	2	3	7	11%	3	6%
Driver Obstructed	0	0	0	0	0	1	0	0	0	0	0	0	1	2%	2	3%
Car Obstructed	0	4	1	4	3	3	1	3	1	5	2	2	3	4%	3	6%
No DMV Match Found	6	8	15	19	10	5	7	13	18	8	15	8	11	19%	6	12%
LASD Expired	0	1	1	0	0	0	1	0	0	0	4	8	3	5%	0	0%
LASD Return	1	0	1	2	1	4	3	2	2	0	0	0	2	3%	1	18%
Yellow Interval Not Met	0	0	0	0	0	0	0	0	0	0	0	0	0	0%	1	3%
Other	0	0	0	0	0	0	0	0	0	0	0	1	1	2%	11	21%
Total:	25	43	57	68	74	34	65	61	56	35	48	43	59	100%	52	100%
Controllable Non-Issued Violations																
Framing of Plate	0	0	0	1	0	0	0	0	0	0	0	0	1	15%	1	18%
Focus / Clarity of Plate	0	0	0	0	1	0	0	0	0	0	0	0	1	15%	2	29%
Dark Interior	0	2	0	0	0	1	1	0	0	0	0	3	2	27%	2	35%
Framing of Driver	0	0	0	0	0	0	0	0	0	0	0	0	0	0%	0	0%
Focus / Clarity of Driver	0	0	0	0	0	0	0	0	0	0	0	0	0	0%	0	0%
Framing of Car	2	1	0	0	0	0	0	0	0	1	0	0	1	20%	1	18%
Operator / Data Error	0	0	0	0	0	0	0	0	0	0	0	0	0	0%	0	0%
Exposure	0	0	0	0	0	0	0	0	0	0	0	0	0	0%	0	0%
Equipment Malfunction	0	0	0	0	0	0	0	0	0	0	0	0	0	0%	0	0%
ACS Expired	0	0	0	0	0	0	0	0	0	1	0	2	2	23%	0	0%
Total:	2	3	0	1	1	1	1	0	0	2	0	5	7	100%	6	100%
Summary Metrics													Year to Date Average		2011 Average	
Daily Ave Vehicle Passes	16,497	17,684	17,734	15,409	15,513	14,162	16,705	14,679	18,357	15,990	16,511	16,875	16,343		16,739	
Ave Issued Speed	31	31	28	29	30	28	29	28	28	31	30	30	29		30	
Ave Issued Red Seconds	0.7	0.4	0.4	0.4	0.8	0.9	0.3	0.3	0.3	0.4	0.4	0.4	0		0.4	
Citation / Violation Iss Rate	67%	66%	57%	57%	51%	71%	57%	55%	62%	71%	59%	57%	61%		57%	
Controllable Iss Rate	96%	97%	100%	99%	99%	99%	99%	100%	100%	98%	100%	93%	98%		97%	



Events	Jan-12	Feb-12	Mar-12	Apr-12	May-12	Jun-12	Jul-12	Aug-12	Sep-12	Oct-12	Nov-12	Dec-12	Year to Date Average		2011 Average	
													Quantity	%	Quantity	%
Non-Violations	0	0	0	0	23	12	0	0	29	27	23	26	23	25%	30	40%
Violations	0	0	0	0	83	79	4	0	70	95	79	78	70	75%	45	60%
Total:	0	0	0	0	106	91	4	0	99	122	102	104	93	100%	75	100%
Violations																
Uncontrollable Non-Issued	0	0	0	0	31	27	3	0	22	44	36	38	29	40%	20	43%
Controllable Non-Issued	0	0	0	0	3	0	0	0	0	2	2	0	2	3%	1	2%
Citations	0	0	0	0	49	52	1	0	48	49	41	40	40	56%	25	55%
Total:	0	0	0	0	83	79	4	0	70	95	79	78	71	100%	46	100%
Non-Violations																
Rear Axle Violation	0	0	0	0	1	0	0	0	1	1	1	1	1	4%	0	0%
Emergency Vehicle	0	0	0	0	3	4	0	0	3	4	3	4	4	15%	3	8%
Right Turn	0	0	0	0	13	5	0	0	19	13	11	11	12	51%	17	55%
No Violation Occurred	0	0	0	0	6	3	0	0	6	9	8	10	7	30%	11	37%
Total:	0	0	0	0	23	12	0	0	29	27	23	26	24	100%	30	100%
Uncontrollable Non-Issued Violations																
No Plate	0	0	0	0	17	8	2	0	11	18	14	22	13	35%	7	31%
Out of State Plate	0	0	0	0	1	2	0	0	3	5	0	1	2	6%	2	7%
Glare on Plate	0	0	0	0	0	0	0	0	0	0	0	0	0	0%	0	0%
Illegible Plate	0	0	0	0	0	0	0	0	0	0	0	0	0	0%	0	0%
Plate Obstructed	0	0	0	0	0	0	0	0	0	0	3	1	2	5%	1	4%
Windshield Glare	0	0	0	0	5	5	0	0	0	1	2	0	3	9%	1	4%
Driver Obstructed	0	0	0	0	0	0	0	0	1	2	0	0	2	4%	0	0%
Car Obstructed	0	0	0	0	2	1	0	0	2	0	4	2	2	6%	3	11%
No DMV Match Found	0	0	0	0	5	8	0	0	3	17	13	9	9	25%	6	24%
LASD Expired	0	0	0	0	0	3	0	0	0	0	0	2	3	7%	0	0%
LASD Return	0	0	0	0	1	0	1	0	2	1	0	1	1	3%	1	100%
Yellow Interval Not Met	0	0	0	0	0	0	0	0	0	0	0	0	0	0%	0	0%
Other	0	0	0	0	0	0	0	0	0	0	0	0	0	0%	3	13%
Total:	0	0	0	0	31	27	3	0	22	44	36	38	37	100%	23	100%
Controllable Non-Issued Violations																
Framing of Plate	0	0	0	0	0	0	0	0	0	0	0	0	0	0%	0	0%
Focus / Clarity of Plate	0	0	0	0	0	0	0	0	0	0	0	0	0	0%	0	0%
Dark Interior	0	0	0	0	0	0	0	0	0	0	0	0	0	0%	0	0%
Framing of Driver	0	0	0	0	0	0	0	0	0	0	0	0	0	0%	0	0%
Focus / Clarity of Driver	0	0	0	0	0	0	0	0	0	0	0	0	0	0%	1	100%
Framing of Car	0	0	0	0	0	0	0	0	0	0	0	0	0	0%	0	0%
Operator / Data Error	0	0	0	0	0	0	0	0	0	0	0	0	0	0%	0	0%
Exposure	0	0	0	0	0	0	0	0	0	2	1	0	2	43%	0	0%
Equipment Malfunction	0	0	0	0	3	0	0	0	0	0	1	0	2	57%	0	0%
ACS Expired	0	0	0	0	0	0	0	0	0	0	0	0	0	0%	0	0%
Total:	0	0	0	0	3	0	0	0	0	2	2	0	4	100%	1	100%
Summary Metrics													Year to Date Average		2011 Average	
Daily Ave Vehicle Passes	0	0	0	0	15,478	15,466	12,954	0	15,282	16,888	16,625	16,448	15,591		15,640	
Ave Issued Speed	0	0	0	0	32	31	28	0	32	33	32	32	31		34	
Ave Issued Red Seconds	0	0	0	0	0.4	0.4	0.1	0	0.4	0.4	0.4	0.7	0		0.3	
Citation / Violation Iss Rate	0%	0%	0%	0%	59%	66%	25%	0%	69%	52%	52%	51%	53%		56%	
Controllable Iss Rate	0%	0%	0%	0%	94%	100%	100%	0%	100%	96%	95%	100%	98%		98%	



A **xerox**  Company

**City of West Hollywood
Customer Service Report
December 2012**

Calls For Information

Reason for Call	Dec-12	3 Month Average	Year to Date Average	Year to Date Total	2011 Average
<i>Appointment</i>	32	37	28	337	16
<i>Bail</i>	29	30	26	307	20
<i>Complaint</i>	0	1	0	2	0
<i>Contest Violation</i>	31	35	33	398	26
<i>Courtesy Notice</i>	1	3	12	142	0
<i>Explain Citation</i>	2	6	6	77	7
<i>Explain Court</i>	0	0	0	0	0
<i>Explain the Project</i>	0	0	0	0	0
<i>Extension</i>	8	13	10	115	9
<i>Other</i>	0	0	0	1	0
<i>Affidavit of Non-Liability</i>	24	27	26	315	22
<i>Affidavit of Non-Liability Status</i>	3	2	2	24	1
<i>Traffic School</i>	8	6	7	83	7
Total Calls	138	160	150	1,801	109
Appointments Scheduled	27	28	23	276	13
Affidavits of Non-Liability Processed	236	302	263	3,157	186
Court Packets Prepared	98	106	85	1018	77



A **xerox** Company

City of West Hollywood
Monthly Citation Yield - By Location
December 2012

Direction	Location	Code	Days of Enforcement	Events	Violations	Citations	Yield*
EB	Beverly & Robertson	3103	31	135	97	58	1.9
WB	Beverly & Robertson	3104	31	175	160	95	3.1
NB	Fairfax & Fountain	3111	31	148	136	79	2.5
SB	Fairfax & Fountain	3112	31	44	39	18	0.6
EB	Fountain & Fairfax	3113	0	0	0	0	NA
NB	Crescent Heights & Fountain	3121	31	42	30	15	0.5
SB	Crescent Heights & Fountain	3122	31	65	38	19	0.6
EB	Fountain & Crescent Heights	3123	0	0	0	0	NA
WB	Fountain & Crescent Heights	3124	9	1	1	0	0.0
NB	La Cienega & Melrose	3131	31	203	175	105	3.4
SB	La Cienega & Melrose	3132	31	202	88	51	1.6
EB	Melrose & La Cienega	3133	0	0	0	0	NA
NB	La Brea & Fountain	3141	31	455	90	45	1.5
SB	La Brea & Fountain	3142	31	494	61	24	0.8
EB	Sunset & La Cienega	3143	31	740	85	47	1.5
WB	Sunset & La Cienega	3144	31	135	103	58	1.9
NB	Fairfax & Santa Monica	3151	31	40	37	15	0.5
SB	Fairfax & Santa Monica	3152	22	37	25	10	0.5
EB	Santa Monica & Fairfax	3153	0	0	0	0	NA
WB	Santa Monica & Fairfax	3154	0	0	0	0	NA
NB	La Brea & Santa Monica	3161	31	254	128	76	2.5
SB	La Brea & Santa Monica	3162	31	419	89	50	1.6
EB	Santa Monica & La Brea	3163	31	161	111	63	2.0
WB	Santa Monica & La Brea	3164	31	104	78	40	1.3
Totals			Average Days of Enf. 29	3,854	1,571	868	30

*Yield is the average number of citations issued per day of enforcement.

- Location not active (Part of Rotation Schedule)
- Location active (Part of Rotation Schedule or In Place of Damaged Location)

DATE	3103	3104	3111	3112	3113	3121	3122	3123	3124	3131	3132	3133	3141	3142	3143	3144	3151	3152	3153	3154	3161	3162	3163	3164	
12/01/12																									
12/02/12			1510/42	1605/10									1234/98	1241/126			1563/8				1394/46	1847/62	1186/42	1574/14	
12/03/12	1132/38	1600/22				1105/10	1133/14		1921/2	1504/32	1151/36				1054/152	1887/34									
12/04/12			1510/16	1605/8					1921/2r				1234/46	1241/46			1563/2				1394/36	1847/56	1186/16	1574/16	
12/05/12	1132/32	1600/10				1105/10	1133/6			1504/16	1151/16	1921/4i			1054/74	1887/14									
12/06/12	1132/8	1600/14	1510/20	1605/6		1105/4	1133/8			1504/14	1151/18	1921/0	1234/38	1241/68	1054/58	1887/2	1563/10				1394/42	1847/54	1186/18	1574/22	
12/07/12																									
12/08/12																									
12/09/12																									
12/10/12	1132/28	1600/42	1510/46	1605/14		1105/8	1133/16			1504/56	1151/68	1921/0	1234/128	1241/172	1054/210	1887/36	1563/10				1394/84	1847/110	1186/48	1574/36	
12/11/12			1510/8	1605/2									1234/26	1241/40			1563/2				1394/14	1847/24	1186/10	1574/4	
12/12/12	1132/18	1600/34				1105/8	1133/10			1504/12	1151/26				1054/132	1887/20					1394/42	1847/50	1186/2	1574/12	
12/13/12			1510/14	1605/2								1921/0r	1234/62	1241/52			1563/10	1921/0i			1394/42	1847/50	1186/2	1574/12	
12/14/12	1132/18	1600/26				1105/6	1133/6			1504/42	1151/36				1054/82	1887/12									
12/15/12																									
12/16/12																									
12/17/12	1132/28	1600/22	1510/58	1605/16		1105/14	1133/12			1504/42	1151/36		1234/144	1241/124	1054/148	1887/28	1563/8	1921/20			1394/92	1847/112	1186/52	1574/34	
12/18/12			1510/10	1605/2									1234/24	1241/24			1563/0	1921/8			1394/12	1847/30	1186/10	1574/10	
12/19/12	1132/2	1600/22				1105/2	1133/8			1504/26	1151/50				1054/138	1887/12									
12/20/12			1510/16	1605/10									1234/68	1241/68			1563/4	1921/14			1394/24	1847/80	1186/20	1574/22	
12/21/12	1132/24	1600/38				1105/16	1133/16			1504/36	1151/24				1054/72	1887/22									
12/22/12																									
12/23/12	1132/18	1600/28	1510/36	1605/4		1105/2	1133/12			1504/24	1151/26		1234/92	1241/124	1054/52	1887/32	1563/8	1921/10			1394/52	1847/76	1186/36	1574/14	
12/24/12																									
12/25/12																									
12/26/12	1132/18	1600/26				1105/6	1133/8			1504/38	1151/34				1054/190	1887/16									
12/27/12			1510/30	1605/4									1234/86	1241/102			1563/12	1921/8			1394/42	1847/104	1186/36	1574/16	
12/28/12	1132/24	1600/28	1510/10	1605/2		1105/4	1133/4			1504/30	1151/30		1234/42	1241/28	1054/20	1887/18	1563/4	1921/0			1394/8	1847/24	1186/10	1574/8	
12/29/12																									
12/30/12	1132/18	1600/28	1510/10	1605/10		1105/2	1133/8			1504/20	1151/10		1234/68	1241/56	1054/82	1887/12	1563/8	1921/8			1394/38	1847/50	1186/12	1574/4	
12/31/12																									

3103 = EB Beverly & Robertson
 3104 = WB Beverly & Robertson
 3111 = NB Fairfax & Fountain
 3112 = SB Fairfax & Fountain
 3113 = EB Fountain & Fairfax

3121 = NB Crescent Heights & Fountain
 3122 = SB Crescent Heights & Fountain
 3123 = EB Fountain & Crescent Heights
 3124 = WB Fountain & Crescent Heights
 3131 = NB La Cienega & Melrose

3132 = SB La Cienega & Melrose
 3133 = EB Melrose & La Cienega
 3141 = NB La Brea & Fountain
 3142 = SB La Brea & Fountain
 3143 = EB Sunset & La Cienega

3144 = WB Sunset & La Cienega
 3151 = NB Fairfax & Santa Monica
 3152 = SB Fairfax & Santa Monica
 3153 = EB Santa Monica & Fairfax
 3154 = WB Santa Monica & Fairfax

3161 = NB La Brea & Santa Monica
 3162 = SB La Brea & Santa Monica
 3163 = EB Santa Monica & La Brea
 3164 = WB Santa Monica & La Brea

	Weekend
	Holiday
	Location Not Active (Rotation Schedule)
	Location Active (Rotation Schedule or In Place of Damaged Location)
	Location Out of Service (Damaged)

	Dec-12		3 Month Average		YTD Total		YTD Average		2011 Average	
Disposition Type	Count /Amount Paid		Count /Amount Paid		Count /Amount Paid		Count /Amount Paid		Count /Amount Paid	
<i>Bail Forfeiture</i>	299	\$151,254	327	\$162,843	3,660	\$1,842,528	305	\$153,544	234	\$119,003
<i>Fine Paid</i>	48	\$26,521	51	\$29,080	504	\$269,155	42	\$22,430	36	\$19,340
<i>Department Void</i>	0	\$0	0	\$0	1	\$0	0	\$0	9	\$0
<i>Not Guilty</i>	589	\$0	618	\$0	4,007	\$0	334	\$0	118	\$0
<i>Section D Void</i>	236	\$0	302	\$0	3,355	\$0	280	\$0	185	\$0
<i>Traffic School</i>	199	\$105,251	205	\$109,239	1,969	\$1,046,672	164	\$87,223	200	\$82,867
Court Gross Total	1371	\$283,026	1,503	\$301,162	13,496	\$3,158,355	1,125	\$263,196	782	\$221,210
City Gross Total*	546	\$80,232	582	\$85,557	6,133	\$900,745	511	\$75,062	470	\$69,138

*Logic built on following model (assuming the new 2009 fine and fee structure):

City receives \$146.31 of \$446.00 citation where bail forfeiture and fine paid occurs

City receives \$148.05 of \$509.00 citation when traffic school option is paid for

	<u>Total</u> <u>Events</u>	<u>Non</u> <u>Violations</u>	<u>Percent</u> <u>Citable</u>	<u>Potential</u> <u>Violations</u>	<u>Initial</u> <u>Rejects</u>	<u>Violations</u> <u>Captured</u>	<u>N/A</u> <u>Returns</u>	<u>DMV</u> <u>Success</u> <u>Rate</u>	<u>Police/</u> <u>Client</u> <u>Rejected</u>	<u>Issuance</u> <u>Rate</u>	<u>Mailed</u>	<u>Dispo</u> <u>Paid</u>	<u>Pay</u> <u>Rate</u>	<u>Closed</u> <u>No Pay</u>	<u>Pending</u>	<u>Closure</u> <u>Rate</u>	<u>Court</u> <u>Packs</u>	<u>Contest</u> <u>Rate</u>
Aug-99	5,074	2,969	41%	2,105	1,412	693	486	70%	4	23%	482	370	77%	104	7	98%	-	-
Sep-99	5,607	3,163	44%	2,444	1,499	945	635	67%	0	26%	635	482	76%	118	21	94%	-	-
Oct-99	7,141	3,425	52%	3,716	1,897	1,819	1,533	84%	11	41%	1,522	1,152	76%	297	45	95%	-	-
Nov-99	6,954	3,908	44%	3,046	1,160	1,886	1,698	90%	4	56%	1,694	1,294	76%	301	46	94%	-	-
Dec-99	6,909	3,728	46%	3,181	1,300	1,881	1,759	94%	4	55%	1,755	1,367	78%	254	90	92%	-	-
Jan-00	6,380	3,365	47%	3,015	1,343	1,672	1,662	99%	31	54%	1,631	1,267	78%	218	102	91%	-	-
Feb-00	5,654	2,699	52%	2,955	1,377	1,578	1,548	98%	11	52%	1,537	1,158	75%	270	56	93%	-	-
Mar-00	6,159	2,902	53%	3,257	1,626	1,631	1,612	99%	3	49%	1,609	1,209	75%	283	67	93%	-	-
Apr-00	5,345	2,897	46%	2,448	1,275	1,173	1,157	99%	9	47%	1,148	855	74%	236	36	95%	-	-
May-00	6,865	3,931	43%	2,934	1,442	1,492	1,479	99%	3	50%	1,476	1,136	77%	204	120	91%	-	-
Jun-00	7,428	3,998	46%	3,430	1,507	1,923	1,900	99%	3	55%	1,897	1,453	77%	244	180	89%	-	-
Jul-00	6,638	3,611	46%	3,027	1,521	1,506	1,491	99%	3	49%	1,488	1,149	77%	196	140	90%	-	-
Aug-00	4,791	1,580	67%	3,211	1,451	1,760	1,736	99%	0	54%	1,736	1,294	75%	231	211	88%	-	-
Sep-00	4,529	1,729	62%	2,800	1,205	1,595	1,574	99%	1	56%	1,573	1,212	77%	221	140	91%	-	-
Oct-00	4,284	1,583	63%	2,701	1,172	1,529	1,505	98%	0	56%	1,505	1,148	76%	209	148	90%	-	-
Nov-00	4,176	1,509	64%	2,667	1,043	1,624	1,608	99%	0	60%	1,608	1,241	77%	234	133	92%	-	-
Dec-00	4,068	1,519	63%	2,549	983	1,566	1,545	99%	0	61%	1,545	1,157	75%	226	162	90%	-	-
Jan-01	3,639	1,423	61%	2,216	868	1,348	1,321	98%	0	60%	1,321	1,022	77%	171	128	90%	-	-
Feb-01	3,795	1,204	68%	2,591	1,058	1,533	1,522	99%	0	59%	1,522	1,137	75%	223	162	89%	-	-
Mar-01	4,093	1,166	72%	2,927	1,240	1,687	1,660	98%	1	57%	1,659	1,254	76%	202	203	88%	-	-
Apr-01	3,497	1,422	59%	2,075	900	1,175	1,156	98%	0	56%	1,156	883	76%	133	140	88%	-	-
May-01	3,406	1,264	63%	2,142	1,098	1,044	1,037	99%	0	48%	1,037	771	74%	118	148	86%	-	-
Jun-01	4,041	1,411	65%	2,630	1,115	1,515	1,495	99%	0	57%	1,495	1,122	75%	131	242	84%	-	-
Jul-01	5,308	2,289	57%	3,019	1,280	1,739	1,718	99%	2	57%	1,716	1,169	68%	261	286	83%	-	-
Aug-01	5,503	1,942	65%	3,561	1,301	2,260	2,222	98%	0	62%	2,222	1,618	73%	210	394	82%	-	-
Sep-01	4,784	1,625	66%	3,159	1,118	2,041	2,001	98%	0	63%	2,001	1,481	74%	167	353	82%	-	-
Oct-01	4,819	1,894	61%	2,925	1,028	1,897	1,862	98%	0	64%	1,862	1,387	74%	193	282	85%	-	-
Nov-01	3,873	1,357	65%	2,516	934	1,582	1,540	97%	17	61%	1,523	1,162	76%	119	242	84%	-	-
Dec-01	3,993	1,703	57%	2,290	954	1,336	1,275	95%	7	55%	1,268	964	76%	114	190	85%	-	-
Jan-02	3,850	1,518	61%	2,332	956	1,376	1,336	97%	2	57%	1,334	1,003	75%	107	224	83%	-	-
Feb-02	3,784	1,413	63%	2,371	829	1,542	1,520	99%	2	64%	1,518	1,141	75%	126	251	83%	-	-
Mar-02	5,093	2,238	56%	2,855	1,083	1,772	1,741	98%	9	61%	1,732	1,300	75%	132	300	83%	-	-
Apr-02	4,475	1,779	60%	2,696	953	1,743	1,713	98%	11	63%	1,702	1,276	75%	152	274	84%	-	-
May-02	4,421	1,484	66%	2,937	1,063	1,874	1,853	99%	0	63%	1,853	1,401	76%	152	300	84%	-	-
Jun-02	4,551	1,347	70%	3,204	1,287	1,917	1,876	98%	0	59%	1,876	1,399	75%	161	316	83%	-	-
Jul-02	4,597	1,414	69%	3,183	1,162	2,021	1,995	99%	4	63%	1,991	1,509	76%	153	329	83%	-	-
Aug-02	4,251	1,273	70%	2,978	1,076	1,902	1,834	96%	7	61%	1,827	1,358	74%	150	319	83%	-	-
Sep-02	4,033	1,414	65%	2,619	958	1,661	1,630	98%	19	62%	1,611	1,191	74%	138	282	82%	-	-
Oct-02	4,024	1,220	70%	2,804	1,085	1,719	1,650	96%	0	59%	1,650	1,219	74%	134	297	82%	-	-
Nov-02	3,643	1,290	65%	2,353	914	1,439	1,386	96%	2	59%	1,384	1,014	73%	127	243	82%	-	-
Dec-02	3,802	1,499	61%	2,303	821	1,482	1,377	93%	0	60%	1,377	1,008	73%	132	237	83%	-	-

	<u>Total</u> <u>Events</u>	<u>Non</u> <u>Violations</u>	<u>Percent</u> <u>Citable</u>	<u>Potential</u> <u>Violations</u>	<u>Initial</u> <u>Rejects</u>	<u>Violations</u> <u>Captured</u>	<u>N/A</u> <u>Returns</u>	<u>DMV</u> <u>Success</u> <u>Rate</u>	<u>Police/</u> <u>Client</u> <u>Rejected</u>	<u>Issuance</u> <u>Rate</u>	<u>Mailed</u>	<u>Dispo</u> <u>Paid</u>	<u>Pay</u> <u>Rate</u>	<u>Closed</u> <u>No Pay</u>	<u>Pending</u>	<u>Closure</u> <u>Rate</u>	<u>Court</u> <u>Packs</u>	<u>Contest</u> <u>Rate</u>
Jan-03	3,897	1,411	64%	2,486	864	1,622	1,461	90%	1	59%	1,460	1,071	73%	125	264	82%	-	-
Feb-03	3,493	1,192	66%	2,301	872	1,429	1,339	94%	3	58%	1,336	963	72%	140	233	83%	-	-
Mar-03	3,934	1,327	66%	2,607	941	1,666	1,568	94%	92	57%	1,476	1,053	71%	179	244	83%	-	-
Apr-03	3,635	1,297	64%	2,338	830	1,508	1,426	95%	155	54%	1,271	904	71%	129	238	81%	-	-
May-03	3,722	1,341	64%	2,381	903	1,478	1,412	96%	69	56%	1,343	949	71%	133	261	81%	-	-
Jun-03	3,798	1,489	61%	2,309	854	1,455	1,427	98%	87	58%	1,340	955	71%	135	250	81%	-	-
Jul-03	3,601	1,249	65%	2,352	874	1,478	1,443	98%	74	58%	1,369	995	73%	145	229	83%	-	-
Aug-03	3,532	1,215	66%	2,317	871	1,446	1,423	98%	15	61%	1,408	995	71%	138	275	80%	-	-
Sep-03	3,372	1,221	64%	2,151	722	1,429	1,405	98%	63	62%	1,342	1,013	75%	115	214	84%	-	-
Oct-03	3,572	1,309	63%	2,263	777	1,486	1,453	98%	59	62%	1,394	1,027	74%	113	254	82%	-	-
Nov-03	3,236	1,123	65%	2,113	773	1,340	1,311	98%	31	61%	1,280	913	71%	136	231	82%	-	-
Dec-03	2,957	1,079	64%	1,878	672	1,206	1,177	98%	48	60%	1,129	799	71%	128	202	82%	-	-
Jan-04	3,098	1,135	63%	1,963	681	1,282	1,259	98%	46	62%	1,213	907	75%	97	209	83%	-	-
Feb-04	3,539	1,173	67%	2,366	752	1,614	1,587	98%	113	62%	1,474	1,050	71%	132	292	80%	-	-
Mar-04	3,683	1,199	67%	2,484	878	1,606	1,573	98%	223	54%	1,350	969	72%	138	243	82%	-	-
Apr-04	2,985	1,121	62%	1,864	664	1,200	1,176	98%	86	58%	1,090	822	75%	73	195	82%	-	-
May-04	3,402	1,191	65%	2,211	759	1,452	1,422	98%	91	60%	1,331	978	73%	102	251	81%	-	-
Jun-04	3,258	1,079	67%	2,179	879	1,300	1,270	98%	11	58%	1,259	939	75%	94	226	82%	-	-
Jul-04	3,450	1,123	67%	2,327	849	1,478	1,441	97%	90	58%	1,351	1,017	75%	90	244	82%	-	-
Aug-04	3,915	1,273	67%	2,642	913	1,729	1,686	98%	87	61%	1,599	1,188	74%	110	301	81%	-	-
Sep-04	3,400	1,161	66%	2,239	808	1,431	1,404	98%	66	60%	1,338	1,022	76%	109	207	85%	-	-
Oct-04	3,547	1,239	65%	2,308	846	1,462	1,421	97%	69	59%	1,352	1,031	76%	91	230	83%	-	-
Nov-04	3,313	1,217	63%	2,096	773	1,323	1,298	98%	37	60%	1,261	942	75%	104	215	83%	-	-
Dec-04	3,294	1,208	63%	2,086	774	1,312	1,285	98%	88	57%	1,197	905	76%	87	205	83%	-	-
Jan-05	2,926	1,073	63%	1,853	698	1,155	1,130	98%	115	55%	1,015	762	75%	74	179	82%	-	-
Feb-05	3,198	1,133	65%	2,065	753	1,312	1,292	98%	118	57%	1,174	862	73%	85	227	81%	-	-
Mar-05	3,446	1,179	66%	2,267	790	1,477	1,404	95%	103	57%	1,301	986	76%	79	236	82%	-	-
Apr-05	3,267	1,237	62%	2,030	744	1,286	1,264	98%	164	54%	1,100	812	74%	90	198	82%	-	-
May-05	2,979	1,083	64%	1,896	638	1,258	1,243	99%	108	60%	1,135	849	75%	79	207	82%	-	-
Jun-05	3,048	1,051	66%	1,997	727	1,270	1,254	99%	89	58%	1,165	852	73%	88	225	81%	-	-
Jul-05	3,531	1,183	66%	2,348	939	1,409	1,388	99%	94	55%	1,294	953	74%	78	263	80%	-	-
Aug-05	3,688	1,198	68%	2,490	1,099	1,391	1,373	99%	54	53%	1,319	965	73%	101	253	81%	-	-
Sep-05	3,645	1,243	66%	2,402	719	1,683	1,665	99%	121	64%	1,544	1,174	76%	99	271	82%	-	-
Oct-05	3,284	1,133	65%	2,151	794	1,357	1,338	99%	53	60%	1,285	952	74%	102	231	82%	-	-
Nov-05	3,693	1,383	63%	2,310	712	1,598	1,570	98%	60	65%	1,510	1,122	74%	130	258	83%	-	-
Dec-05	3,376	1,409	58%	1,967	602	1,365	1,344	98%	70	65%	1,274	890	70%	163	221	83%	-	-
Jan-06	3,501	1,385	60%	2,116	708	1,408	1,386	98%	55	63%	1,331	966	73%	130	235	82%	133	10%
Feb-06	3,398	1,306	62%	2,092	767	1,325	1,298	98%	76	58%	1,222	891	73%	136	195	84%	111	8%
Mar-06	3,837	1,537	60%	2,300	738	1,562	1,536	98%	110	62%	1,426	1,020	72%	164	242	83%	135	9%
Apr-06	3,893	1,799	54%	2,094	767	1,327	1,307	98%	106	57%	1,201	863	72%	165	173	86%	113	9%
May-06	3,791	1,476	61%	2,315	711	1,604	1,575	98%	122	63%	1,453	1,030	71%	167	256	82%	133	9%
Jun-06	4,069	1,519	63%	2,550	848	1,702	1,581	93%	137	57%	1,444	1,009	70%	182	253	82%	76	6%
Jul-06	3,776	1,385	63%	2,391	755	1,636	1,613	99%	130	62%	1,483	1,006	68%	203	274	82%	124	9%
Aug-06	3,064	917	70%	2,147	688	1,459	1,419	97%	132	60%	1,287	869	68%	129	289	78%	114	9%
Sep-06	2,785	883	68%	1,902	604	1,298	1,275	98%	98	62%	1,177	820	70%	140	217	82%	103	7%
Oct-06	3,091	1,092	65%	1,999	817	1,182	1,162	98%	130	52%	1,032	748	72%	133	151	85%	131	11%
Nov-06	3,470	1,340	61%	2,130	920	1,210	1,186	98%	141	49%	1,045	747	71%	136	162	84%	54	4%
Dec-06	3,122	1,002	68%	2,120	888	1,232	1,124	91%	115	48%	1,009	715	71%	116	178	82%	97	7%

	<u>Total</u>	<u>Non</u>	<u>Percent</u>	<u>Potential</u>	<u>Initial</u>	<u>Violations</u>	<u>N/A</u>	<u>DMV</u>	<u>Police/</u>	<u>Issuance</u>		<u>Dispo</u>	<u>Pay</u>	<u>Closed</u>		<u>Closure</u>	<u>Court</u>	<u>Contest</u>
	<u>Events</u>	<u>Violations</u>	<u>Citable</u>	<u>Violations</u>	<u>Rejects</u>	<u>Captured</u>	<u>Returns</u>	<u>Success</u>	<u>Client</u>	<u>Rate</u>	<u>Mailed</u>	<u>Paid</u>	<u>Rate</u>	<u>No Pay</u>	<u>Pending</u>	<u>Rate</u>	<u>Packs</u>	<u>Rate</u>
Jan-07	3,119	937	70%	2,182	894	1,288	1,166	91%	90	49%	1,076	681	63%	241	154	86%	89	6%
Feb-07	2,874	913	68%	1,961	801	1,160	1,034	89%	77	49%	957	666	70%	128	163	83%	86	7%
Mar-07	3,309	1,144	65%	2,165	817	1,348	1,178	87%	99	50%	1,079	745	69%	166	168	84%	84	7%
Apr-07	3,145	1,093	65%	2,052	862	1,190	1,064	89%	88	48%	976	678	69%	102	196	80%	89	9%
May-07	3,368	1,267	62%	2,101	918	1,183	1,052	89%	64	47%	988	703	71%	115	170	83%	75	7%
Jun-07	3,364	1,094	67%	2,270	916	1,354	1,170	86%	75	48%	1,095	767	70%	99	229	79%	79	8%
Jul-07	3,088	1,121	64%	1,967	789	1,178	1,019	87%	46	49%	973	628	65%	126	219	77%	57	5%
Aug-07	2,790	954	66%	1,836	748	1,088	936	86%	28	49%	908	573	63%	132	203	78%	73	8%
Sep-07	3,004	1,110	63%	1,894	870	1,024	887	87%	30	45%	857	518	60%	65	274	68%	68	6%
Oct-07	2,879	1,079	63%	1,800	784	1,016	898	88%	29	48%	869	558	64%	64	247	72%	37	4%
Nov-07	2,795	972	65%	1,823	688	1,135	1,004	88%	41	53%	963	574	60%	94	295	69%	63	6%
Dec-07	2,748	977	64%	1,771	696	1,075	959	89%	55	51%	904	601	66%	81	222	75%	63	6%
Jan-08	2,635	959	64%	1,676	676	1,000	886	89%	36	51%	850	638	75%	82	130	85%	85	9%
Feb-08	2,490	908	64%	1,582	749	833	718	86%	5	45%	713	534	75%	64	115	84%	103	11%
Mar-08	2,850	929	67%	1,921	930	991	894	90%	7	46%	887	655	74%	102	130	85%	45	5%
Apr-08	2,896	1,016	65%	1,880	971	909	803	88%	5	42%	798	546	68%	82	170	79%	98	11%
May-08	2,995	1,095	63%	1,900	913	987	852	86%	5	45%	847	574	68%	94	179	79%	81	8%
Jun-08	2,834	965	66%	1,869	852	1,017	914	90%	8	48%	906	608	67%	123	175	81%	67	7%
Jul-08	2,729	901	67%	1,828	807	1,021	933	91%	7	51%	926	589	64%	128	209	77%	68	8%
Aug-08	2,264	618	73%	1,646	545	1,101	1,009	92%	10	61%	999	682	68%	125	192	81%	64	9%
Sep-08	2,495	765	69%	1,730	667	1,063	947	89%	6	54%	941	638	68%	97	206	78%	63	7%
Oct-08	2,847	1,023	64%	1,824	701	1,123	1,008	90%	13	55%	995	677	68%	118	200	80%	84	11%
Nov-08	2,694	950	65%	1,744	616	1,128	1,000	89%	8	57%	992	707	71%	88	197	80%	58	7%
Dec-08	2,754	921	67%	1,833	787	1,046	936	89%	17	50%	919	640	70%	78	201	78%	64	7%
Jan-09	2,521	894	65%	1,627	597	1,030	915	89%	11	56%	904	613	68%	97	194	79%	88	10%
Feb-09	2,292	807	65%	1,485	583	902	811	90%	5	54%	806	541	67%	115	150	81%	73	7%
Mar-09	2,547	895	65%	1,652	661	991	896	90%	6	54%	890	593	67%	120	177	80%	96	10%
Apr-09	2,457	835	66%	1,622	697	925	812	88%	8	50%	804	529	66%	127	148	82%	110	11%
May-09	2,655	903	66%	1,752	693	1,059	955	90%	34	53%	921	642	70%	126	153	83%	90	9%
Jun-09	2,815	1,043	63%	1,772	683	1,089	980	90%	18	54%	962	632	66%	133	197	80%	65	7%
Jul-09	5,699	3,778	34%	1,921	768	1,153	1,048	91%	19	54%	1,029	691	67%	116	222	78%	57	6%
Aug-09	5,250	3,442	34%	1,808	716	1,092	992	91%	10	54%	982	614	63%	178	190	81%	67	8%
Sep-09	4,663	3,263	30%	1,400	418	982	879	90%	4	63%	875	610	70%	106	159	82%	62	7%
Oct-09	5,176	3,375	35%	1,801	701	1,100	982	89%	12	54%	970	598	62%	192	180	81%	71	9%
Nov-09	4,685	3,033	35%	1,652	671	981	885	90%	31	52%	854	574	67%	118	162	81%	44	5%
Dec-09	5,024	3,633	28%	1,391	570	821	739	90%	15	52%	724	485	67%	114	125	83%	110	11%
Jan-10	5,401	4,068	25%	1,333	492	841	744	88%	20	54%	724	479	66%	100	140	80%	26	3%
Feb-10	5,714	4,366	24%	1,348	528	820	683	83%	14	50%	669	440	66%	80	142	78%	70	7%
Mar-10	5,919	4,388	26%	1,531	670	861	764	89%	22	48%	742	500	67%	93	137	80%	83	9%
Apr-10	7,093	5,453	23%	1,640	746	894	775	87%	14	46%	761	469	62%	111	165	76%	73	8%
May-10	5,863	4,149	29%	1,714	678	1,036	942	91%	23	54%	919	589	64%	91	198	74%	64	7%
Jun-10	5,251	3,457	34%	1,794	774	1,020	929	91%	19	51%	910	570	63%	112	175	75%	48	7%
Jul-10	4,809	3,053	37%	1,756	769	987	891	90%	11	50%	880	538	61%	81	197	70%	108	15%
Aug-10	4,662	2,930	37%	1,732	692	1,040	952	92%	17	54%	935	538	58%	95	226	68%	41	6%
Sep-10	4,451	2,945	34%	1,506	622	884	777	88%	7	51%	770	464	60%	47	188	66%	82	11%
Oct-10	4,319	2,874	33%	1,445	577	868	780	90%	40	51%	740	432	58%	43	193	64%	57	7%
Nov-10	4,287	2,766	35%	1,521	565	956	869	91%	71	52%	798	456	57%	7	234	58%	53	6%
Dec-10	3,873	2,396	38%	1,477	826	651	586	90%	36	37%	550	308	56%	6	145	57%	90	10%
Jan-11	3,669	2,521	31%	1,148	610	538	491	91%	8	42%	483	276	57%	75	132	73%	77	9%

	<u>Total</u> <u>Events</u>	<u>Non</u> <u>Violations</u>	<u>Percent</u> <u>Citable</u>	<u>Potential</u> <u>Violations</u>	<u>Initial</u> <u>Rejects</u>	<u>Violations</u> <u>Captured</u>	<u>N/A</u> <u>Returns</u>	<u>DMV</u> <u>Success</u> <u>Rate</u>	<u>Police/</u> <u>Client</u> <u>Rejected</u>	<u>Issuance</u> <u>Rate</u>	<u>Mailed</u>	<u>Dispo</u> <u>Paid</u>	<u>Pay</u> <u>Rate</u>	<u>Closed</u> <u>No Pay</u>	<u>Pending</u>	<u>Closure</u> <u>Rate</u>	<u>Court</u> <u>Packs</u>	<u>Contest</u> <u>Rate</u>
Feb-11	3,783	2,473	35%	1,310	697	613	557	91%	11	42%	546	295	54%	94	157	71%	65	7%
Mar-11	4,531	2,930	35%	1,601	679	922	814	88%	56	47%	758	428	56%	110	220	71%	62	8%
Apr-11	4,141	2,832	32%	1,309	450	859	756	88%	4	57%	752	369	49%	137	246	67%	80	11%
May-11	4,972	3,122	37%	1,850	1,034	816	733	90%	6	39%	727	334	46%	138	255	65%	73	9%
Jun-11	4,237	2,674	37%	1,563	715	848	772	91%	3	49%	769	313	41%	140	316	59%	69	13%
Jul-11	4,491	2,758	39%	1,733	690	1,043	900	86%	10	51%	890	355	40%	143	392	56%	103	21%
Aug-11	5,035	3,178	37%	1,857	735	1,122	1,003	89%	7	54%	996	364	37%	188	444	55%	73	13%
Sep-11	4,383	2,596	41%	1,787	716	1,071	947	88%	6	53%	941	359	38%	160	422	55%	111	15%
Oct-11	4,447	2,447	45%	2,000	640	1,360	1,182	87%	30	58%	1,152	460	40%	166	526	54%	52	7%
Nov-11	4,450	2,563	42%	1,887	616	1,271	1,148	90%	26	59%	1,122	425	38%	182	515	54%	77	11%
Dec-11	4,277	2,419	43%	1,858	516	1,342	1,156	86%	29	61%	1,127	417	37%	126	584	48%	84	11%
Jan-12	4,352	2,421	44%	1,931	516	1,415	1,198	85%	44	60%	1,154	387	34%	97	670	42%	103	12%
Feb-12	4,258	2,352	45%	1,906	588	1,318	1,120	85%	48	56%	1,072	313	29%	133	626	42%	57	6%
Mar-12	4,807	2,581	46%	2,226	777	1,449	1,280	88%	33	56%	1,247	342	27%	151	754	40%	60	6%
Apr-12	4,920	2,703	45%	2,217	822	1,395	1,246	89%	35	55%	1,211	265	22%	159	787	35%	89	8%
May-12	5,216	2,789	47%	2,427	850	1,577	1,417	90%	65	56%	1,352	199	15%	177	976	28%	84	7%
Jun-12	3,227	1,228	62%	1,999	386	1,613	1,452	90%	73	69%	1,379	195	14%	134	1,050	24%	95	8%
Jul-12	4,806	2,412	50%	2,394	862	1,532	1,381	90%	79	54%	1,302	147	11%	64	1,091	16%	59	5%
Aug-12	5,237	2,698	48%	2,539	837	1,702	1,489	87%	67	56%	1,422	83	6%	20	1,319	7%	54	5%
Sep-12	5,087	2,704	47%	2,383	726	1,657	1,463	88%	71	58%	1,392	10	1%	17	1,365	2%	134	12%
Oct-12	4,567	2,410	47%	2,157	649	1,508	1,320	88%	51	59%	1,269	5	0%	5	1,259	1%	114	10%
Nov-12	3,983	2,247	44%	1,736	474	1,262	1,056	84%	36	59%	1,020	2	0%	3	1,015	0%	71	6%
Dec-12	3,854	2,283	41%	1,571	483	1,088	899	83%	31	55%	868	-	0%	1	867	0%	98	8%
Total	647,910	298,221	54%	349,689	137,011	212,678	199,675	94%	6,520	55%	193,155	127,431	68%	20,986	43,782	79%	6,739	8%

* Total Pay and Closure Rates omit the last 4 months to allow for court processing

** The Contest Rate assumes a 6 month lag from the violation date and is only available from January 2006 to present